

TABLE OF CONTENTS

EXECUTIVE SUMMARY	3
PURPOSE	3
CONTENT	3
METHODOLOGY	3
PRINCIPAL FINDINGS	4
RESPONDENT PROFILE	4
CURRENT BOAT PRACTICES	4
PERCEPTIONS OF RISK ASSOCIATED WITH BEHAVIORS	5
MOTIVATIONS FOR CHANGE	5
POTENTIAL USE OF MARINA SERVICES	6
INTRODUCTION.....	7
SAMPLE DESIGN AND SURVEY METHODOLOGY	7
STYLE AND ANALYSES USED IN THIS REPORT	10
SURVEY SAMPLE CHARACTERISTICS	12
AGE, GENDER, ETHNICITY, AND INCOME	12
BOAT INFORMATION	13
CURRENT PRACTICES	16
OIL CHANGING PRACTICES	16
CLEANING PRACTICES	17
SOURCE OF LEAKS	18
DISPOSAL METHODS: OIL, OIL FILTERS, ABSORBENT PADS & RAGS	19
FUEL PRACTICES	19
PERCEPTION OF RISK ASSOCIATED WITH BEHAVIORS.....	21
DISPOSAL OF OIL	21
CLEANING OIL SPILLS	21
FUEL SPILLS	22
MOTIVATION FOR CHANGE.....	23
BOATERS REASONS FOR NOT RECYCLING	23
FACTORS THAT WOULD PERSUADE BOATERS TO RECYCLE	23
FACTORS THAT WOULD PERSUADE BOATERS TO CLEAN SPILLED OIL IN ENVIRONMENTALLY SOUND WAYS.	25
POTENTIAL USE OF MARINA SERVICES.....	26
WHERE BOATERS GET INFORMATION	27
APPENDIX A (QUESTIONNAIRE)	A1
APPENDIX B (FREQUENCY TABLES BY REGION AND COUNTY).....	B1
APPENDIX C (OPEN-ENDED AND “OTHER” RESPONSES).....	C1

TABLE OF TABLES

TABLE 1	POPULATION AND SAMPLE STATISTICS OF BOATERS IN EACH REGION	9
TABLE 2	DISTRIBUTION OF RESPONDENTS IN EACH OF 15 SELECTED COUNTIES	9
TABLE 3	ETHNICITY AND GENDER.....	12
TABLE 4.	BOAT TYPE BY REGION	14
TABLE 5	LOCATION OF TYPICAL BOAT USE BY REGION.....	15
TABLE 6	FUELING PRACTICES BY BOAT TYPE, REGION, AND TYPICAL BOATING LOCATION	20
TABLE 7	OIL CHANGE PRACTICES FOR DO-IT-YOURSELFERS (BY BOAT TYPE AND REGION).....	16
TABLE 8	FACTORS THAT CONTRIBUTE TO OIL LEAKS BY REGION AND BOAT TYPE.....	18
TABLE 9	REASONS WHY BOATERS DO NOT RECYCLE THEIR OIL.....	23
TABLE 10	WHAT WOULD INFLUENCE BOATERS TO RECYCLE USED OIL?	24
TABLE 11	POTENTIAL USE OF BOATING SERVICES.....	27
TABLE 12	SOURCES OF BOATER INFORMATION	27

TABLE OF FIGURES

FIGURE 1	AGE OF RESPONDENTS	12
FIGURE 2	ANNUAL INCOME OF RESPONDENTS	13
FIGURE 3	DISTRIBUTION OF BOAT TYPES IN THE SAMPLE	13
FIGURE 4	OIL CHANGING PRACTICES BY BOAT TYPE.....	17
FIGURE 5	PERCEIVED ENVIRONMENTAL RISK OF METHODS USED TO CLEAN OIL THAT HAS SPILLED INTO THE BOTTOM OF A BOAT OR BILGE.....	22

Boating Clean And Green Campaign Survey

1998

EXECUTIVE SUMMARY

This survey was conducted for the California Coastal Commission's Boating Clean and Green Campaign, a statewide program funded by the CA Integrated Waste Management Board's Used Oil Program. The Public Research Institute (PRI), at San Francisco State University, conducted a telephone survey of 1001 motorized boat owners in 15 California counties during the period of January-April 1998. This survey of California boater practices and attitudes concerning oil and fuel spills was funded by the California Integrated Waste Management Board, the California Coastal Commission, and the following agencies: the Marin County Stormwater Pollution Prevention Program, the Orange County Department of Environmental Health, the San Francisco Hazardous Waste Management Program, the San Joaquin County Department of Public Works, and the Santa Clara County Department of Environmental Health.

Purpose

The purpose of this study was to provide information about boater practices that would be useful to the Boating Clean and Green Campaign in its efforts to: (1) develop and implement public education programs aimed at the reduction of oil and fuel related water pollution stemming from boat use; and (2) to assist local agencies and marinas in implementing programs to reduce boat-generated pollution, including the installation of pollution control services

Content

The survey instrument was developed by PRI in collaboration with the California Coastal Commission, and the California Integrated Waste Management Board's Used Oil Program. It included questions on the general topics of oil changing and disposal practices, fueling practices, methods for cleaning oil and fuel spills, attitudes and perceptions regarding environmental risks associated with oil and fuel spills, motivations for improved practices, and potential use of marina services. The survey instrument is included in this report as Appendix A.

Methodology

The obtained sample of 1001 California motorized boat owners was stratified to represent the following four California regions: **Delta**: (Contra Costa County, Sacramento County, San Joaquin County, Solano County, Yolo County), **San Francisco Bay**: (Alameda County, Napa County, Marin County, San Francisco County, San Mateo County, Santa Clara County, Sonoma County), **Southern Ca**: (Orange County, San Diego County), **Los Angeles**: (Los Angeles County). California Department of Motor Vehicle Boater Registration records were used as the sampling frame for this study. All boaters in the counties of interest that had a motorized boat registered with the DMV in December 1997 and for whom telephone numbers could be obtained were included in the survey sample. The calculated response rate for this survey is 38%. The margin of error for a sample of this size is plus or minus three percentage points at the 95% confidence level.

PRINCIPAL FINDINGS

Respondent Profile

- The majority of respondents were Caucasian (86%), male (86%), and over the age of 50 (76%).
- Sixty-one percent of respondents report an annual income between \$26,000 and \$75,000.
- Northern California respondents primarily boat on lakes: 46% of respondents from San Francisco Bay and 36% of San Francisco Delta reported “lakes” as their primary location for boating.
- Southern California respondents were split between “lakes” and “the coast” as their primary locations to boat. Fifty-percent of LA and 36% of Southern Californian respondents indicated “lakes” as their location, and 45% of Southern Californian and 37% of LA respondents indicated “the coast” as their primary boating location.
- When asked to give their boat type, 45% indicated owning an Inboard craft, 31% reported owning an Outboard craft, 9% reported a Sailboat, 5% reported a Personal craft, 3% owned a Jet Propelled craft, and 7% reported owning “other” craft.
- Just under half (49.5%) of all respondents reported having an automatic bilge pump.
- Forty-eight percent of respondents keep their boats on a trailer, 21% keep their boat in a marina, 19% keep them in a land based storage facility, 4% keep them at a mooring, and 10% keep their boats somewhere else.

Current Boat Practices

Oil Changing Practices

- The majority (76%) of respondents whose boats require oil changes, report that they change their own oil.
- Seventy-three percent of these *do-it-yourselfers* said they change their oil at home (this accounts for 55% of all respondents), with 41% of those individuals draining their oil into a closed container.
- Twenty-three percent of do-it-yourselfers drain their oil into an open container.

Cleaning Practices

- Just over half (52%) of respondents use either an oil absorbent pad (29%), or a rag (23%) to clean oil that has spilled *in their boat*.
- When asked how they clean oil that has spilled into the water, 83% responded that they never spill oil into the water.
- Thirty-three percent of boaters who do spill oil *into the water* reported that they “don’t do anything” to clean it, 12% report using soaps or detergents.

Source of Leaks

- Thirty-nine percent of boaters reported that a bilge pump discharging into the water is their primary source of oil leaks, with the engine leaks as the second leading contributor at (31%). Also contributing to leaks; spills from containers (27%), and spills due to a lack of space under the crank case (22%).

Disposal Methods

- Overall, 63% of all respondents reported taking their used oil to “a gas station, auto store, and/or other collection center”.
- The most common method of disposal of oil rags, absorbent pads, and oil filters is “the trash or garbage dump” (57%, 39%, & 34% respectively).

Fueling Practices

- Almost half (49.5%) of all boaters report fueling in the water, 75% of these boaters fuel their own boat, the remaining use fuel dock operators.
- Overall, 90% of all boaters reported fueling slowly.
- 81% of all respondents report that they do not top off their fuel tank.

Perceptions of Risk Associated with Behaviors

Disposal of Oil

- The majority of respondents (83%) perceive that the way they dispose of used oil poses *no risk* to the environment.
- In assessing their oil filter disposal practices, 54% report that their methods pose *no risk* to the environment.

Cleaning Oil Spills

- Over half of the respondents (59%) indicated that they think the manner in which they clean oil from the bottom of their boat does pose some risk to the environment.
- Fifteen percent report knowing of laws that prohibit the use of detergents on spills.

Fuel Spills

- Overall, the majority of boaters (80%) perceive fuel spills resulting from boats like theirs are a risk to the environment.

Motivations for Change

Reasons for Not Recycling

- When asked for a reason they had not recycled oil, 73% of boaters reported they do recycle their oil.
- “I never considered recycling,” was the most common reason cited (27%) for not recycling used oil.

Factors That Would Persuade Boaters to Recycle

- Boaters reported “knowing it was illegal to dispose of used oil in the trash, stormdrain, and/or ground” as the most persuasive factor in influencing their decision

to recycle oil. Sixty-seven percent said it would have a *very significant* impact on their decision to recycle oil.

Factors That Would Persuade Boaters to Clean Spilled Oil in Environmentally Sound Ways

- “Knowing it is illegal to discharge oil directly into waterways” was cited as the most persuasive factor influencing boaters' decision to clean spilled oil in an environmentally safe manner. Overall, 68% said it would have a *very significant* impact on their decision to use oil absorbent pads and/or a bilge pump-out facility.
- Jet Propelled boaters cited “knowing oil is a hazardous waste” as having the most impact on their decision to use oil absorbent pads and/or bilge pump-out facility.

Potential Use of Marina Services

- Over half of all boaters queried stated that they would use each of six services mentioned if they were free of charge. Those services are: (a) bilge pump-out stations at fueling or sewage pump-out locations, (b) mobile bilge pump-out services, (c) oil absorbent pads, (d) loans of small oil change pumps, (e) loans of oil collection containers, and (f) oil change services
- Of the services suggested in the survey, the most popular three were free absorbent pads (82%), bilge pump-out stations (66%), and distribution of oil collection containers (64%).

Boating Clean And Green Campaign Survey 1998

INTRODUCTION

This is a report of results obtained from the 1998 telephone survey of 1001 California motorized boater owners, conducted by the Public Research Institute (PRI) for the California Coastal Commission's *Boating Clean and Green Campaign*. Agencies which provided funding and support for this survey include; the California Integrated Waste Management Board, the California Coastal Commission, the Marin County Stormwater Pollution Prevention Program, the Orange County Department of Environmental Health, the San Francisco Hazardous Waste Management Program, the San Joaquin County Department of Public Works, and the Santa Clara County Department of Environmental Health. In general, respondents were asked about their practices with regard to changing and disposing of their oil, fueling their boats, and cleaning oil and fuel spills. They were also queried as to their perceptions of environmental risk associated with oil and fuel spills. Information was obtained as to respondents' willingness to engage in specific behaviors intended to reduce boating related water pollution and their main resources for boater information. These survey findings should be useful in developing new public education programs and targeting strategies for reducing hydrocarbon pollution associated with oil changes, fueling, and improper engine maintenance. This study is intended to provide information useful to all boater education and boat-related pollution programs in California. The results of this survey will guide the Coastal Commission's development of the educational materials and oil pollution control strategies for boating in California.

Sample design and survey methodology

Data collection was conducted at PRI's Computer Assisted Telephone Interviewing (CATI) facility. The survey questionnaire was programmed for CATI using Acs-Query software. A team of interviewers and data collection supervisors received PRI's general interviewer training as well as specific training with the Boating Clean and Green questionnaire.

Interviewing took place during the period beginning January 9, 1998, and concluding on March 31, 1998. Interviews were conducted on weekdays from 4:00-9:00 p.m. and on Sundays from 1:00-7:00 p.m. Interviews averaged 10 minutes in duration. In order to optimize response rate, up to nine attempts were made to contact each boater in the sample on different days and at different times.

The California Department of Motor Vehicles Boater Registration records were used as the sampling frame for this study. From the complete list of all registered boater owners as of December 1997, interviews were conducted with motorized boat owners from the following California counties: Alameda, Contra Costa, Los Angeles, Marin, Napa, Orange, Sacramento, San Diego, San Francisco, San Joaquin, San Mateo, Santa Clara, Solano, Sonoma, and Yolo. The sample was limited to owners of boats registered in these 15 counties, because the Commission's *Campaign* focuses outreach in these Counties. These counties represent areas within the state where registered boats are heavily concentrated. Owners of non-motorized boats were excluded from the sample as they are not likely to contribute to oil and fuel leaks. The 15 selected counties were aggregated into four

geographic regions: **Delta:** (Contra Costa County, Sacramento County, San Joaquin County, Solano County, Yolo County), **San Francisco Bay:** (Alameda County, Marin County, Napa County, San Francisco County, San Mateo County, Santa Clara County, Sonoma County), **Southern California:** (Orange County, San Diego County), and **Los Angeles:** (Los Angeles County). The obtained interviews were distributed over these four regions so as to be within one percentage point of the distribution of boaters in each region relative to the population. See Table 1 and Table 2, next page, for the distribution of completed interviews in each region and each county.

Table 1 Population and Sample Statistics of Boaters in Each Region

Region	Registered Boaters in the Population	Proportion in Pop.	Number of Completed Interviews	Proportion in Sample
DELTA	134,468	26%	271	27%
SF BAY	115,339	23%	230	23%
SOUTH CA	136,235	27%	269	27%
LA	124,365	24%	231	23%
Total	510,407	100%	1001	100%

Table 2 Distribution of Respondents in Each of 15 Selected Counties

County	Frequency	Percent
Alameda	75	7.5
Contra Costa	86	8.6
LA	231	23.1
Marin	32	3.2
Napa	14	1.4
Orange	131	13.1
Sacramento	106	10.6
San Diego	138	13.8
San Francisco	15	1.5
San Joaquin	38	3.8
San Mateo	11	1.1
Santa Clara	37	3.7
Solono	25	2.5
Sonoma	46	4.6
Yolo	16	1.6

Survey response rate

The calculated response rate for this survey is 38%. Conceptually, the response rate is the number of completed interviews as a proportion of all eligible potential respondents contacted. This is calculated by dividing the number of completed interviews (1001) by the total number of contacted eligible respondents (1001+1617, completes plus refusals). Since some people who refuse to participate in the survey do so before their eligibility can be established, the true response rate for this survey may be slightly higher than what can be documented here.

$$1001/(1001+1617)=.38$$

Sampling error

Given a total sample size of 1001, the estimated sampling error for percentages is plus or minus 3% at the 95% confidence level. That means one can be 95% sure that all registered boat owners in the 15 sampled counties would produce responses to survey questions within $\pm 3\%$ of the statistics for the total sample reported here. For example, if 50% of the survey respondents answered yes to some question, we can be 95% confident that if we asked every registered boater in each of the 15 counties, their responses would be between 47% and 53%. Sampling errors for each region are $\pm 6\%$ at the 95% confidence interval. Sampling errors for other sample subgroups may be larger. Non-sampling errors that might result from poor question wording, non-response bias, data entry mistakes, etc., were minimized by means of pre-testing of the questionnaire instrument, numerous retries and callbacks, and quality control supervision.

Style and Analyses Used in this Report

The format and grammatical style used in this report conforms to standards of technical writing. The reader may note differences in syntax or grammatical structure from the general rules of common English writing.

Chi-Square Statistic

It is often useful to know if certain groups of people respond to a particular question differently than other groups. For instance, we may want to know if boaters in one region of the state responded differently when asked what they would be willing to do in order to reduce oil and fuel spills into the water. These differences can easily be seen by looking at the number of respondents in one region compared to the number of respondents in each of the other regions on the items asking them to indicate their willingness to engage in specific behaviors. The question then becomes how many more respondents in one region have to answer differently than those in other regions in order for us to consider it a “real” difference in the way that boaters think? In the social sciences, these types of questions can be answered using the chi-square statistic. The chi-square statistic measures whether the difference in responses on one variable (in this case willingness to engage in a specific behavior) is contingent on another variable (region of the state). If we can say with 95% confidence that yes, willingness to engage in a specific behavior is contingent on the region in which the boater lives, we call this a “statistically significant” difference.

Findings Reported

The main groups of interest examined in this study were those of regions and various boat types. Other cross tabulations were done on an item by item basis driven by theoretical importance. For simplicity of use, only the statistically significant bivariate findings are included in this report. The reader should assume that all group differences reported are statistically significant unless otherwise noted.

SURVEY SAMPLE CHARACTERISTICS

The majority of respondents are Caucasian (86%), Males (86%), over the age of 50 (76%), and with annual incomes between \$26,000 and \$75,000 (61%). See Table 3, Figure 1, and Figure 2 for illustrations of these demographic items.

Age, Gender, Ethnicity, and Income

Table 3 Ethnicity and Gender

Ethnicity	
Caucasian	85.9%
African American	1.8%
Asian	1.6%
Latino	1.2%
Native American	1.1%
Other	2.9%
Refused to state	5.5%
Gender	
Male	84%
Female	16%

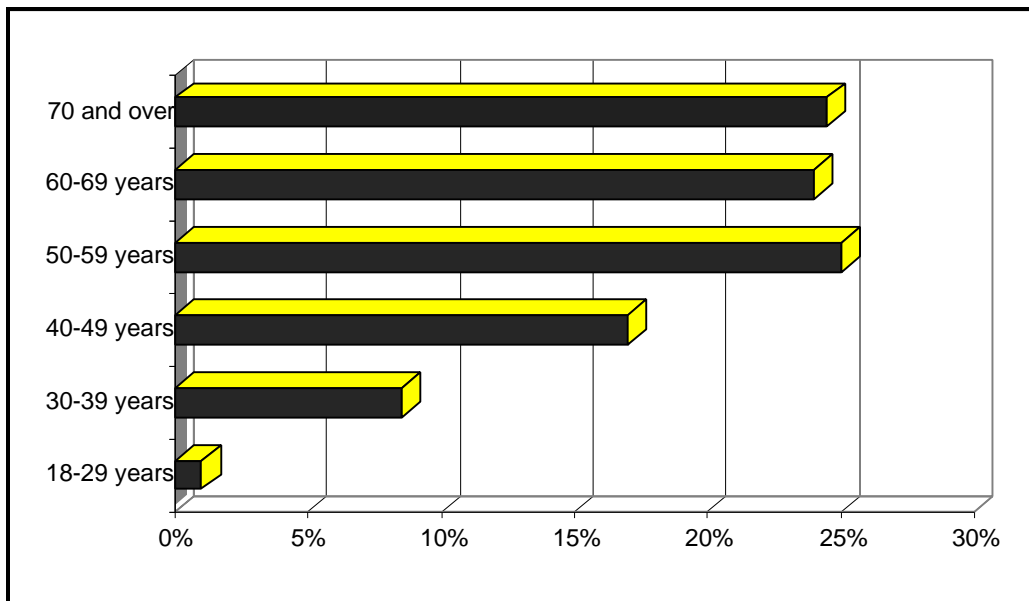


Figure 1 Age of Respondents

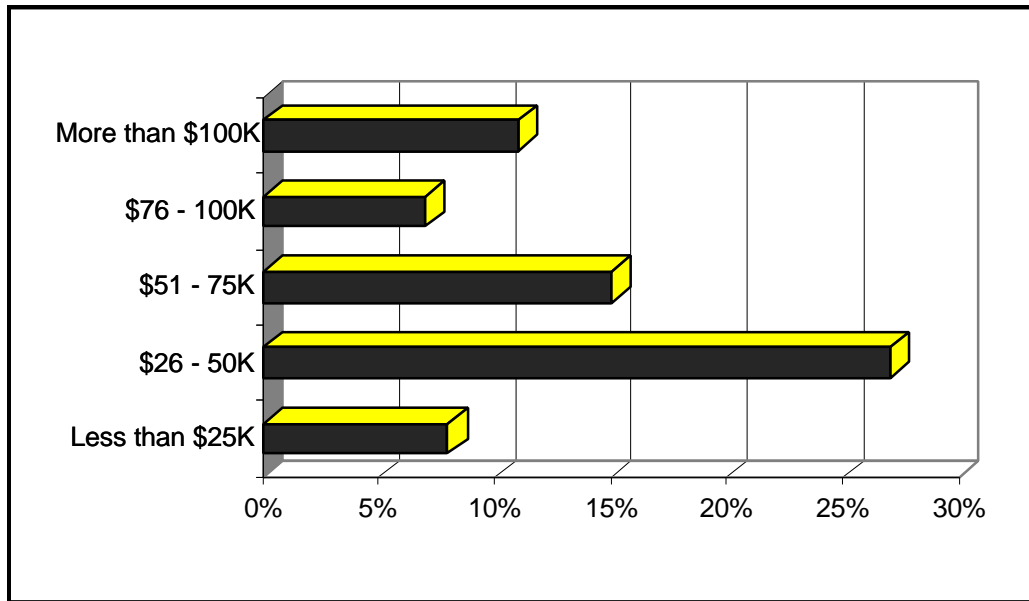


Figure 2 Annual Income of Respondents

Boat Information

Inboard boat owners constituted the largest group (45%) of respondents. Compared to the DMV boating records for the selected counties, our obtained sample over-represents sailboat, inboard, and “other” boat owners. “Other” boats are those for which the respondent did not give a response within the scripted options, *and* the propulsion type in the DMV record was listed as “other”. All other boats were coded into their appropriate propulsion category based on the DMV records and respondent comments. Figure 3 shows the distribution of boat types in the obtained sample.

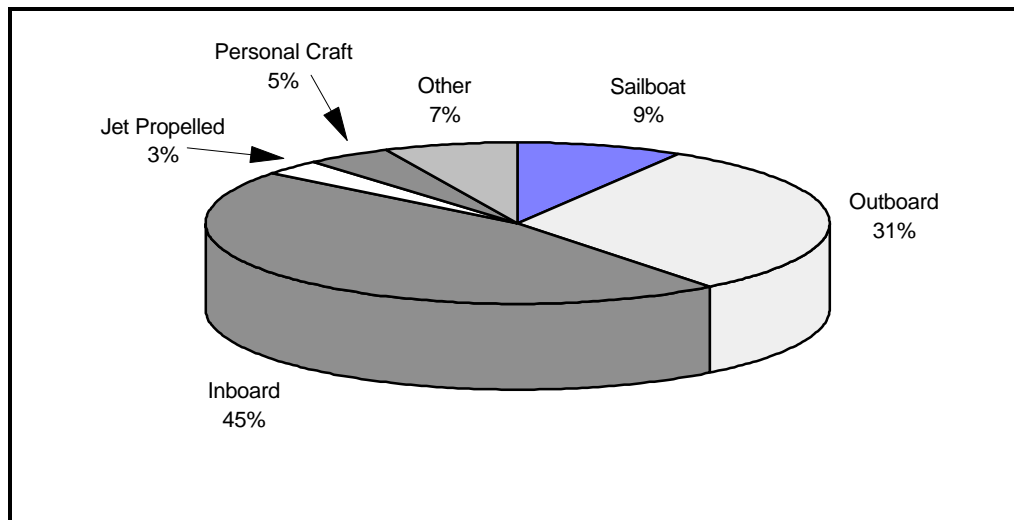


Figure 3 Distribution of Boat Types in the Sample

Table 4. Boat Type by Region

BOAT TYPE	REGION			
	SF BAY	DELTA	S. CA	LA
Sailboat	9%	6%	11%	9%
Outboard	27.5%	33.5%	31%	32%
Inboard	50%	48%	41%	46%
Jet Propelled	3%	4%	4%	2%
Personal Craft	3%	2.5%	7%	6%
Other Type	7.5%	6%	6%	5%
TOTAL	100%	100%	100%	100%

Just under half (49.5%) of all respondents reported having an automatic bilge pump on their boat. Proportionally fewer of the respondents with outboard motors (26%) than any of the other boaters reported having an automatic bilge pump. Fifty-eight percent of inboard and jet propelled boat owners reported automatic bilge pumps. Sail boat owners were right at the overall average with 49% percent having automatic bilge pumps. Thirty-nine percent of personal water craft owners reported having automatic bilge pumps.

Almost half (48%) of all respondents keep their boats on a trailer during the boating/fishing season. Twenty-one percent keep their boats in the marina, 19% keep them in a land-based storage facility, 10% keep their boats *somewhere else*, and 4% keep their boats at a mooring. Outboard owners are the most likely (64%) to keep their boat on a trailer during the boating/fishing season, sailboat owners are the most likely to keep their boat in the Marina (63%), and personal water craft owners are the most likely (48%) to keep their boat at a land-based storage facility. See Appendix C for a list of the open-ended comments on where respondents keep their boat that did not correspond with the scripted options.

When asked where they usually use their boat, the largest proportion (42%) of respondents indicated that they boat on inland lakes. Overall, 24% of respondents reported boating on the coast, 9% reported boating primarily on rivers, and 8% reported boating *somewhere else* (see Appendix C for a list of these responses). Sixty-four percent of the northern California respondents stated that either the San Francisco Bay or the Delta was their primary boating location. More of the southern California respondents, including those in Los Angeles, report boating on the coast than did the northern California boaters. See Table 5.

Table 5 Location of Typical Boat Use by Region

	REGION			
	SF BAY	DELTA	S. CA	LA
Lakes	46%	36%	36%	50%
Rivers	3%	17%	8%	8%
Coast	10%	4%	45%	37%
SF Bay	27%	12%	-	-
Delta	10%	21%	-	-
Somewhere Else	6%	9%	10%	6%
TOTAL	100%	100%	100%	100%

CURRENT PRACTICES

Oil Changing Practices

Thirty percent of all respondents reported that their boats do not require an oil change. (Interviewers notes for these responses showed that many boaters report having engines that use an oil-gas mixture for fueling. As reported by the boat owners, these engines burn oil during operation and therefore do not require an oil change). Forty-seven percent of those boaters who reported that they do not require an oil change, own outboard motor boats.

Table 6 Oil Change Practices for Do-it-Yourselfers (by Boat Type and Region)

<i>Q16 “..When you change the oil, do you. (use)”</i>						
	<i>Oil Pump</i>	<i>Bilge Pump</i>	<i>Closed Container</i>	<i>Open Container</i>	<i>Something Else</i>	<i>Total</i>
Overall	27%	2%	41%	23%	7%	100%
Boat Type						
Sail Boat Owners	42%	2%	40%	16%	0%	100%
Outboard Owners	12%	0%	42%	37%	9%	100%
Inboard Owners	35%	1%	41%	18%	6%	100%
Jet Propelled	5%	14%	67%	14%	0%	100%
Personal Craft	14%	14%	36%	23%	14%	100%
Region						
San Francisco Bay	27%	1%	48%	19%	5%	100%
San Francisco Delta	32%	3%	36%	19%	10%	100%
Southern California	20%	4%	40%	32%	4%	100%
Los Angeles	29%	0%	44%	19%	8%	100%

* Values in cells are row percentages

For those respondents whose boats do require an oil change, 76% reported changing their own oil. Almost three-fourths of these “do-it-yourselfers”, (73%) change their oil at home. When asked about the methods they used to change their own oil; 41% of respondents reported using a closed container, 27% use an oil pump, 23% use an open container, and 2% use a bilge pump. See Table 6, previous page.

Outboard owners of Southern California are the most likely to use an open container when transferring their oil, with 32% of Southern California boaters using this method and 37% of Outboard owners. Sailboat owners who change their own oil are more likely than other boat owners to use safe oil changing practices, with 42% reporting they use an oil pump, and 40% reporting using a closed container

Forty-three percent of respondents who do not change their own oil, reported taking their boat to a boatyard, while 35% said they hired someone to change their oil, and 23% reported doing *something else* (see Appendix C). Sailboat owners are by far more likely to hire someone to change their oil. While Inboard boat owners are the most likely to have their oil changed at a boatyard (50%). See Figure 4.

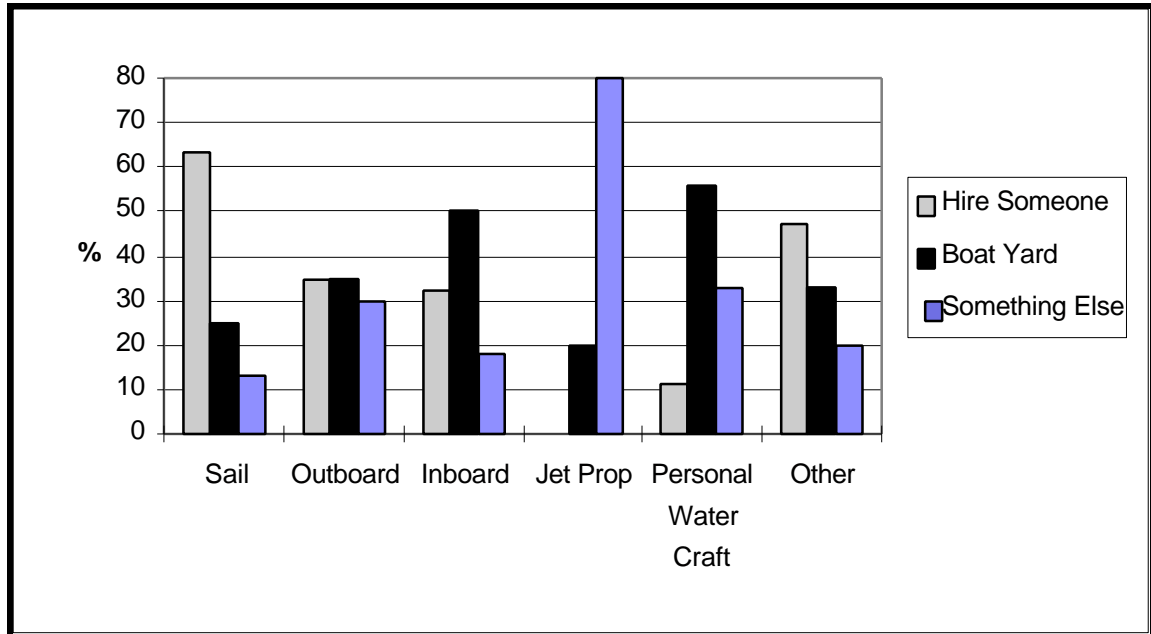


Figure 4 Oil Changing Practices by Boat Type

Cleaning Practices

Eighty-two percent of the boaters surveyed stated that they never notice oil in the bottom of their boat or bilge. For those that have noticed oil in these areas, the most common methods for cleaning the oil are oil-absorbent pads (29%) and rags/paper towels (23%). As for cleaning oil spilled into the water, 83% responded that they “never spilled oil into the water”. Thirty-three percent of the remaining respondents reported doing nothing, 26% use an oil absorbent pad and/or rag to clean up the spill, 12% use soap, and 28% reported using *other* methods (see Appendix C for complete listing of these methods).

Due to the tendency of individuals to under-report undesirable behaviors, it is possible that more boaters do spill oil into waterways than can be reported here. This coupled with almost half of the self-reported spillers either ignoring or using soaps on oil spills may indicate that boaters as a group need to be made aware of the proper methods for cleaning oil that has spilled in the water regardless of the small proportion of boaters who report that this actually happens.

Source Of Leaks

When questioned as to the source of their oil leaks, respondents most frequently indicated “the automatic bilge pump discharges oil into the water” (39%), followed by “leaks in the engine” (31%), “not enough room under the crank case for a container to catch the oil” (27%), and finally “oil spilling out of the container during transfer” (22%). See Table 7, next page. Thus, while *automatic bilge pumps discharges* and *leaks from the engine* are the most common source of oil leaks, problems associated with changing oil are common as well.

Sixty-six percent of the respondents who indicated that their bilge pump discharges oil directly into the water also reported that they never notice oil in the bottom of their boat or bilge. These self-reports seem contradictory and we can not be certain which responses are more accurate. However, due to the tendency to under-report behaviors that may be looked upon negatively by others, we should not disregard the finding that automatic bilge pumps are reported as a contributor to oil leaks by over one-third of the survey sample. If this proportion is skewed in any direction, we would expect that it is an under-representation of what actually happens.

Table 7 Factors that Contribute to Oil Leaks by Region and Boat Type

<i>Q78-82 “...List Of Factors That May Contribute To Oil Leaks Or Spills From Your Boat...”</i>				
	<i>Bilge Pump Discharges into H2O</i>	<i>Engine Leaks</i>	<i>Container Spills</i>	<i>No Room Under the Crank Case</i>
All Respondents	39%	31%	27%	22%
San Francisco Bay	37%	29%	27%	22%
San Francisco Delta	34%	31%	23%	15%
Southern California	42%	31%	28%	28%
Los Angeles	38%	34%	31%	21%
Boat Type				
Sail boat	43%	39%	24%	30%
Outboard	36%	27%	23%	22%
Inboard	38%	33%	29%	19%
Jet Propelled	67%	38%	46%	35%
Personal Craft	55%	23%	26%	32%
Where They Boat				
Lakes	42%	32%	31%	30%
Rivers	40%	31%	31%	18%
The Coast	37%	32%	26%	16%
San Francisco Bay	42%	34%	19%	7%

Disposal Methods: Oil, Oil Filters, Absorbent Pads & Rags.

Oil

When asked how they dispose of used oil, 63% of respondents reported taking it to “a gas station, auto store, or other oil collection center”. Seventeen percent of respondents reported taking their used oil “to a household hazardous waste collection center”, 7% reported using a marina recycling bin, 3% reported using curb-side recycling, 1.3% reported putting their oil in the “trash or garbage dump,” and 8.7% reported “Other” disposal methods. All tolled, 90% of respondents reported recycling their used oil.

Jet propelled boat owners and personal craft owners are the most likely to dispose of their oil at “a gas station, auto store, or other oil collection center” (81% and 77% respectively). Sixty-three percent of inboard boat owners reported disposing their used oil at “a gas station, auto store, or other collection center”. Slightly fewer outboard owners (60%), and sailboat owners (58%) use this method of disposal.

Oil Filters

For those boaters that reported using oil filters, the primary method of disposal of their oil filter was “the trash or garbage dump” (34%). Twenty-seven percent reported taking their used oil filters to the “gas station, auto store, or other oil collection center”, and 13% reported taking their used oil filters to a household hazardous waste collection center. With less than half of the boaters surveyed indicating that they recycle their used oil filters, it is clear that boaters should be made aware of the hazardous characteristics of used oil filters.

Absorbent Pads & Rags

The “trash or garbage dump” was also the most common method of disposal for both oil rags and absorbent pads. Fifty-seven percent of all respondents put their oil pads in the trash, and 39% put their rags in the trash. More respondents reported recycling their oil absorbent pads (42.5%) than rags (26.5%). We can not be sure that boaters lack awareness of the dangers associated with disposing of oil soaked materials in the trash, however, it does seem that education in this area is warranted.

Fuel Practices

Almost half (49.5%) of all respondents reported fueling their boats in the water. Seventy-five percent of these boaters fuel their own boat, the remaining boaters use fuel dock operators. Of those fueling their own boat, 90% reported fueling slowly, 81% reported they do not top off the fuel tank, and 68% said they use an absorbent pad or rag to wipe up spills when fueling. Table 8 illustrates, by category, the proportion of respondents that use each method when fueling their boats.

More jet propelled boat owners (76%) fuel their boat in the water than do outboard owners (35%). However, proportionally fewer jet propelled owners (45%) than any other boat owner reported using an absorbent pad or rag to wipe up spills when fueling. Additionally, while not statistically significant, more owners of jet propelled boats, than any

other boat type, top off their fuel tanks. In other words, owners of jet propulsion boats are more likely to fuel in the water and also more likely to engage in unsafe fueling practices. See Table 8.

Table 8 Fueling Practices by Boat Type, Region, and Typical Boating Location

	<i>Fuel In The Water</i>	<i>Fuel Your Own Boat</i>	<i>Use Pad or Rag When Fueling</i>	<i>Top Off The Fuel Tank</i>	<i>Fuel Slowly</i>
Overall	49.5%	75%	68%	19%	90%
Boat Type					
Sail Boat Owners	64%	67%	89%	8%	97%
Outboard Owners	35%	77%	64%	17%	85%
Inboard Owners	58%	75%	67%	21%	93%
Jet Propelled	76%	80%	45%	25%	85%
Personal Craft	41%	79%	67%	13%	73%
Region					
San Francisco Bay	47%	85%	63%	11%	88%
San Francisco Delta	50%	77%	72%	21%	86%
Southern California	52%	66%	69%	18%	89%
Los Angeles	50%	77%	68%	25%	99%
Where They Boat					
Rivers	53%	86%	64%	31%	76%
Lakes	42%	78%	58%	15%	95%
The Coast	53%	66%	84%	21%	93%
San Francisco Bay	65%	85%	81%	17%	79%
San Francisco Delta	60%	77%	70%	14%	92%

* Values in cells are the percentage of respondents indicating that “yes” they engage in each practice. These values should not be summed.

While not statistically significant, fewer respondents in the San Francisco Bay region fuel their boats in the water than do boaters in the other regions (47% of boaters in the Bay versus 50-52% of boaters in other regions). These Bay area boaters are, however, more likely to fuel their own boats (85% as compared to 66-77% of boaters in other regions).

Fewer of the respondents who regularly boat on lakes fuel their boats in the water than do those who boat on rivers, the coast, the SF Bay, or the Delta. People that boat on the coast are less likely to fuel their own boat (66%) than are people who boat on lakes, rivers, the SF Bay, or the Delta. Proportionally more of these coastal boaters, however, use a pad or rag when fueling (84%) than do boaters on lakes, rivers, the Delta, or those who boat *somewhere else*. Respondents who boat on rivers and in the SF Bay are less likely to fuel their boats slowly than are boaters in other areas.

PERCEPTION OF RISK ASSOCIATED WITH BEHAVIORS

As a follow-up to asking respondents about their behaviors with regard to fueling their boats, changing their oil, and cleaning spills, respondents were asked to appraise the risk that their behavior poses to the environment.

Disposal of Oil

The majority of respondents (83%) indicate that their oil disposal method poses *no risk* to the environment (remember 90% reported recycling their oil). Five of the seven people who reported that they dispose of their used oil by putting it in the trash or taking it to the garbage dump stated that they felt this method posed *no risk* to the environment. Likewise, the one person who reported pumping used oil out of a bilge stated that this method was *no risk* to the environment. These are very small numbers of people and we are unable to make statistical inferences based on this data. However, that some individuals report disposing of oil in any way other than recycling as presenting *no risk* to the environment is surprising.

Fewer respondents were as confident about the safety of their oil filter disposal method. When assessing their oil filter disposal practices, 64% of respondents reported that their method poses *no risk* to the environment while 30% stated that it poses a *slight risk* to the environment (these proportions exclude the 16% of respondents that either refused to answer this question or reported that they "did not know"). Of those respondents who reported disposing of their used oil filters in the trash or at the dump, 29% indicated that they thought this method posed *no risk* to the environment and 57% thought it posed a *slight risk*. For the remaining respondents, 13% thought it posed a *moderate risk*, and 1% thought it posed a *great risk* to the environment.

Overall, boaters reported being much more sensitive to oil itself as a hazardous material, and measurably less concerned with oil saturated materials rags, pads, filters as hazardous materials.

Cleaning Oil Spills

Over half of the respondents (59%) indicated that they think the manner in which they clean oil from the bottom of their boat or bilge poses some risk to the environment. When examining the four most frequently endorsed methods of cleaning oil from the bottom of boats or bilge's (oil absorbent pads, rags or towels, soap, and *other*) we find that the majority of the respondents who use rags/towels or some *other* method do not think that they are engaging in a risky practice (see Figure 5, next page). Boaters using soaps reported their cleaning method poses a *slight risk*. The two respondents who indicated that the way in which they clean oil poses a *great risk* to the environment gave responses other than those provided as scripted options. Their responses were: "a mechanic does it" and "I drain it out when [my] boat is at home". It is clear from these findings that many boaters feel that their oil cleaning methods are environmentally unsound and they may need to be made aware of safe alternatives.

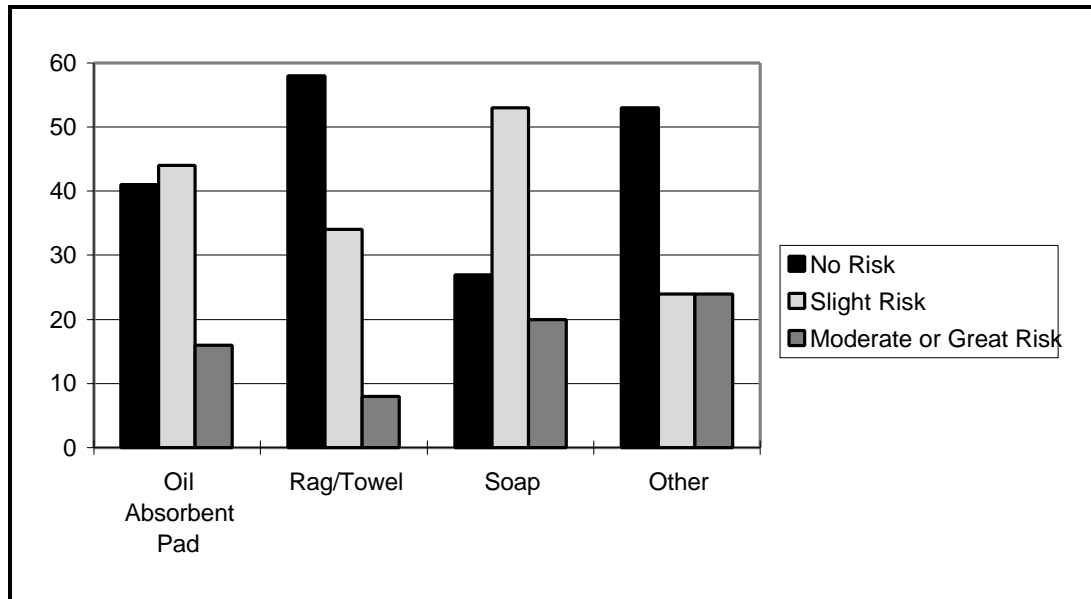


Figure 5 Perceived Environmental Risk of Methods Used to Clean Oil That has Spilled into the Bottom of a Boat or Bilge.

Fuel Spills

Overall, the majority of respondents (80%) believe that fuel spills from boats like theirs pose a risk to the environment. However, over half (58%) of these boaters indicated that fuel spills are only *slightly risky*, 24% reported that fuel spills are *moderately risky*, and 19% believe that fuel spills pose a *great risk* to the environment.

Respondents who fuel their boats in the water were also asked several questions about their fueling practices. These respondents were grouped into those who engage in either safe or unsafe fueling practices. Respondents who fuel safely are those who stated that they “use an absorbent pad or rag to wipe up spills”, they “fuel slowly”, and they do not “top off” their fuel tank. There were no differences in the perception of fuel spill risks between respondents who engage in safe fueling practices and those who fuel their boats in unsafe ways. In other words, respondents felt that fuel spills are hazardous to the environment regardless of whether they engage in practices that might reduce fuel spills.

MOTIVATION FOR CHANGE

Boaters Reasons for NOT Recycling

When boaters were asked to indicate reasons they had not recycled their used oil, 73% responded that they “do recycle their oil”. For the remaining respondents, the most common reason cited for not recycling used oil was “they never considered it” (27%). Table 9, , shows the remaining reasons cited for not recycling oil.

Table 9 Reasons Why Boaters Do Not Recycle Their Oil

Q25-33 “...For each item mentioned, please tell me whether it is a reason why you have not recycled your used boat oil.....Is this a reason why you have not recycled your boat oil.....”

<i>no</i>	Yes	Reasons Boaters Do Not Recycle
63%	27%	Never Consider Recycling
80%	20%	I Don't Think There Is Anything Wrong With Throwing Oil In The Trash
81%	19%	No Place To Recycle Near My House
72%	18%	Don't Know Where To Take It
82%	18%	I Don't Think There Is Anything Wrong With Pumping It Out From The Bilge*
84%	16%	No Place To Recycle At The Marina
84%	16%	Other Reasons Not Mentioned? (See Appendix C For List of Responses)
87%	13%	The Hazardous Waste Facility Is Too Inconvenient To Use
95%	5%	Marina Recycling Facility Is Too Inconvenient

**This question was asked only of those respondents that reported owning a bilge pump.*

Factors That Would Persuade Boaters To Recycle

Regardless of their reported disposal methods, all respondents were asked to indicate factors that would persuade boaters to recycle their oil. Overall, the factor that had the most influence in persuading boaters to recycle their used oil was “knowing it is illegal to dispose of oil in trash, storm drain, and/or ground”. Sixty-seven percent of all respondents said this would have a *very significant* impact on their decision to recycle oil. The majority of respondents also reported “if I thought it was better for the environment” (64%), and “knowing that oil is a hazardous waste” (62%), as very significant factors that would persuade them to recycle their used oil. Overall, respondents seemed less persuaded by factors such as, “recycling center near your home” (58%), “recycling program at the marina” (40%), and “thought your friends recycled” (34%).

Sailboat owners seem to be influenced by a “recycling program at their marina,” more so than their cohorts. Remember, proportionally more sailboat owners than any of the other owners reported keeping their boats in marinas (63%). When controlling for where they keep their boats, and examining only those boaters who keep their boats at a marina, there are no significant differences between owners of sailboats and other boat owners in the importance of marina recycling programs. Outboard owners were most persuaded by bettering their environment, 66% said thinking of recycling oil as being better for the

environment would have a *very significant* impact on their decision to recycle. However, 63% of outboard owners also indicated a recycling center near their home would have a *very significant* impact on their decision to recycle their used oil.

Comparisons were made between the reasons provided as to why boaters do not recycle their used oil and the various motivators. While not significant, 73% boaters that reported that there is nothing “wrong with throwing oil in the trash” said “knowing oil is a hazardous waste” would have a *very significant* impact on their decision to recycle oil. Seventy percent of these respondents reported knowing it was “better for the environment”, as having a *very significant* impact. Respondents that indicated “no place to recycle”, were actually proportionately less persuaded by having “a recycling center near their home” (48%) than respondents as a whole (58%). For those respondents that reported “no recycling at the marina” as a reason they do not recycle, 58% said “a recycling program at the marina” would have a *very significant* impact on their decision to recycle.

Boat owners in all four regions indicated “knowing it was illegal to dispose of used oil in the trash, stormdrain” as the most persuasive factor in whether they would recycle their oil. Boaters of Southern California were the least persuaded with “knowing oil is a hazardous waste (55%)”. For more factors that may influence various boaters see Table 10.

Table 10 What Would Influence Boaters to Recycle Used Oil?

Q 36-41 “...if (boaters) had cause to recycle oil, what would influence (them) to do so....”

	<i>Knew It Was Illegal To Dispose</i>	<i>Better For The Environmen t</i>	<i>Knew Oil Is A Hazardous Waste</i>	<i>Recycling Center Near Home</i>	<i>Recycling Program At Marina</i>	<i>Thought Your Friends Recycled</i>
Overall	67%	64%	62%	58%	40%	34%
Boat Type						
Sail Boat Owners	62%	56%	58%	42%	47%	21%
Outboard Owners	63%	66%	65%	63%	42%	40%
Inboard Owners	72%	67%	65%	61%	43%	35%
Jet Propelled	64%	52%	48%	39%	12%	18%
Personal Craft	54%	48%	46%	52%	22%	22%
Region						
San Francisco Bay	69%	69%	69%	66%	43%	39%
San Francisco Delta	66%	63%	63%	56%	37%	37%
Southern California	65%	58%	55%	52%	38%	26%
Los Angeles	69%	65%	65%	61%	44%	35%

* Values in cells are the percentage of respondents indicating that each item would be “very significant” in influencing them to recycle used boat oil. These values should not be summed.

Factors That Would Persuade Boaters To Clean Spilled Oil in Environmentally Sound Ways.

Overall, the most influential factor in persuading boaters to use environmentally sound cleaning practices was “knowing it was illegal to discharge oil directly into waterways.” Sixty-eight percent of respondents indicated it would have a *very significant* impact on their decision to use oil absorbent pads and/or a bilge pump facility. Sixty-four percent of respondents said “knowing oil was a hazardous waste”, would be a *very significant* factor. While 61% of respondents said they would use oil absorbent pads and/or bilge pump facilities if they “thought it was better for environment”, and if they “thought it would increase the fish and wildlife”. Respondents were less persuaded to change their cleaning practices by factors such as; “free oil absorbent pads” (52%), “knew it was illegal to use detergents or soaps” (44%), and finding a “bilge pump-out facility close to home” (41%). Only 15% of the boaters in this survey knew of existing laws limiting the use of detergents on oil spills or sheens.

Jet propelled boat owners reported knowing oil is a hazardous waste as the most significant factor in persuading them to using sound cleaning methods. The most persuasive factor reported for sailboat, outboard, and inboard owners was “knowing it is illegal to discharge oil directly into waterways” (respectively 58%, 68%, 71% reported this a *very significant* factor). Personal water craft owners indicated they would be most persuaded to use oil absorbent pads and bilge pump-out facilities if it would increase fish and wildlife in the area they boat (55% reporting it would be very significant).

POTENTIAL USE OF MARINA SERVICES

Respondents were queried as to their potential use of various boater services if these services were offered at marinas or fuel docks. The services were: (a) bilge pump-out stations at fueling or sewage pump-out locations, (b) mobile bilge pump-out services, (c) oil absorbent pads, (d) loans of small oil change pumps, (e) loans of oil collection containers, and (f) oil change services. Each respondent was asked if they would use each service if it were free of charge. The boaters who stated that they would use the free service were asked if they would be willing to pay a fee for that service. Respondents who stated that they would pay a fee were asked how much they would be willing to pay to use each service.

Over half of the surveyed boaters stated they would avail themselves of each of the services mentioned if they were offered free. The service endorsed by most boaters (82%) as something they would use is oil absorbent pads. Sixty-seven percent of these respondents indicated that they would also be willing to pay a fee for oil absorbent pads. The majority of these boaters (66%) were not likely, however, to pay more than \$5 for absorbent pads. When accounting for those boaters who stated they would not use this service at all, we find that 55% of all boaters would pay a small fee for the use of oil absorbent pads. The service that would be used by the smallest proportion of boaters surveyed (53%), is oil change pumps. Fifty-seven percent of those who stated they would use oil change pumps, were they free of charge, stated that they would pay a fee for this service. Thirty-six percent of those respondents would pay \$10 or more for oil change pumps.

While over half of the current do-it-yourselfers stated that they would use oil change services if they were available free of charge, fewer do-it-yourselfers were willing to pay a fee for this service than boaters who do not change their own oil (66% versus 82%). Do-it-yourselfers were also less willing to pay more than \$15 for this service than were their counterparts (22% of do-it-yourselfers versus 45% of the respondents who already utilize some form of oil change service). See Table 11, next page, for a listing of potential service use by boat type. For the complete distributions of potential use and willingness to pay a fee refer to Appendix B.

Table 11 Potential Use of Boating Services

	<i>Bilge Pump Out Stations</i>	<i>Mobile Bilge Pump Out Stations</i>	<i>Oil Absorbent Pads</i>	<i>Oil Change Pumps</i>	<i>Oil Collection containers</i>	<i>Oil Change Service</i>
Overall	66%	56%	82%	53%	64%	62%
Boat Type						
Sail Boat Owners	61%	50%	77%	39%	56%	55%
Outboard Owners	58%	53%	75%	51%	61%	62%
Inboard Owners	70%	59%	87%	60%	67%	62%
Jet Propelled	85%	69%	100%	65%	69%	73%
Personal Craft	71%	52%	81%	52%	74%	71%

** Values in cells are the percentage of respondents indicating that “yes” they would use this service if it were free of charge. These values should not be summed.

Where Boaters Get Information

Table 12 Sources of Boater Information

Marine Supply Shop	74%
Boat Shows	56%
Friends and Relatives	55%
*Other Boating Publications	43%
Government Agency	37%
Boating Column in the Newspaper	34%
Boating Associations	31%
*Cable TV, Boating Programs	25%
*Other Sources	23%
Latitude 38	20%
Your Yacht Club	18%
*Internet	16%
*Radio Boating Programs	11%
* See Appendix C for listed response to these questions	

Overall, the majority of respondents indicated they received some of their boating information at “marina supply shops”(74%), “boat shows” (56%), and “friends and relatives” (55%). Three information sources that were endorsed by relatively small proportion of boaters in general, were the primary sources of information for sailboat owners. While a minority (20%) of all respondents indicated that they get information from Latitude 38, 65% of sailboat owners refer to Latitude 38 for their information. Sixteen percent of all respondents reported using a yacht club as a source of information, 57% of sailboat owners use yacht clubs. Lastly, 52% of sailboat owners report that they get boating information from a boating association compared to 31% of all respondents.

Personal water craft owners were the most likely to get their boat information from the

internet (28%). Boat information via cable TV reaches more outboard boat owners (32%) than any other type of boat owner. Compared with respondents overall, Inboard and Outboard owners showed no significant difference in where they received their boating information.

Q5. What kind of boat do you currently own?

REGION:	Sailboat w/gas or diesel motor	Outboard gas or diesel motor	Inboard/ Outboard	Jet Propelled	Personal Water Craft (Jet Ski)	Other type
SF Bay (n=230)	9.13	27.39	50.00	3.04	3.04	7.39
SF Delta (n=271)	5.90	33.58	48.34	3.69	2.58	5.90
Southern CA (n=269)	10.78	31.23	40.52	4.09	7.06	6.32
Los Angeles (n=231)	8.66	32.47	45.89	2.16	5.63	5.19
COUNTY:						
Alameda (n=75)	5.33	26.67	56.00	2.67	4.00	5.33
Contra Costa (n=86)	4.65	26.74	56.98	6.98	1.16	3.49
Los Angeles (n=231)	8.66	32.47	45.89	2.16	5.63	5.19
Marin (n=32)	31.25	21.88	43.75	-	-	3.12
Napa (n=14)	-	57.14	28.57	7.14	7.14	-
Orange (n=131)	11.45	27.48	35.11	8.40	11.45	6.11
Sacramento (n=106)	1.89	47.17	37.74	0.94	5.66	6.60
San Diego (n=138)	10.14	34.78	45.65	-	2.90	6.52
San Francisco (n=15)	20.00	33.33	46.67	-	-	-
San Joaquin (n=38)	7.89	26.32	52.63	2.63	-	10.53
San Mateo (n=11)	9.09	27.27	45.45	-	-	18.18
Santa Clara (n=37)	8.11	13.51	45.95	8.11	2.70	21.62
Solano (n=25)	12.00	20.00	56.00	4.00	-	8.00
Sonoma (n=46)	-	32.61	56.52	2.17	4.35	4.35
Yolo (n=16)	25.00	18.75	50.00	6.25	-	-
TOTAL (N=1001)	8.59	31.27	45.05	3.30	4.60	6.19

Q7. Does your boat have an automatic bilge pump?

REGION:	Yes	No	Don't know
SF Bay (n=230)	47.39	50.00	2.61
SF Delta (n=271)	41.70	57.20	1.11
Southern CA (n=269)	42.01	55.76	2.23
Los Angeles (n=231)	48.92	50.22	0.87
COUNTY:			
Alameda (n=75)	54.67	38.67	6.67
Contra Costa (n=86)	52.33	46.51	1.16
Los Angeles (n=231)	48.92	50.22	0.87
Marin (n=32)	53.12	46.88	-
Napa (n=14)	50.00	50.00	-
Orange (n=131)	42.75	54.20	3.05
Sacramento (n=106)	29.25	68.87	1.89
San Diego (n=138)	41.30	57.25	1.45
San Francisco (n=15)	46.67	53.33	-
San Joaquin (n=38)	47.37	52.63	-
San Mateo (n=11)	54.55	45.45	-
Santa Clara (n=37)	45.95	51.35	2.70
Solano (n=25)	44.00	56.00	-
Sonoma (n=46)	30.43	69.57	-
Yolo (n=16)	50.00	50.00	-
TOTAL (N=1001)	44.76	53.55	1.70

Q8. About how many days a year do you use your boat?

REGION:	Less than 12	12 to 23 days	24 to 48 days	96 to 192 days	More than 192
SF Bay (n=230)	54.35	26.09	12.17	5.22	2.17
SF Delta (n=271)	57.93	24.35	10.33	5.54	1.85
Southern CA (n=269)	53.53	26.39	12.27	5.95	1.86
Los Angeles (n=231)	53.68	25.97	14.29	3.46	2.60
COUNTY:					
Alameda (n=75)	54.67	30.67	12.00	1.33	1.33
Contra Costa (n=86)	60.47	18.60	13.95	6.98	-
Los Angeles (n=231)	53.68	25.97	14.29	3.46	2.60
Marin (n=32)	34.38	28.12	12.50	15.62	9.38
Napa (n=14)	64.29	21.43	14.29	-	-
Orange (n=131)	56.49	23.66	15.27	3.82	0.76
Sacramento (n=106)	57.55	31.13	6.60	3.77	0.94
San Diego (n=138)	50.72	28.99	9.42	7.97	2.90
San Francisco (n=15)	60.00	13.33	20.00	6.67	0
San Joaquin (n=38)	50.00	23.68	13.16	7.89	5.26
San Mateo (n=11)	54.55	18.18	-	27.27	-
Santa Clara (n=37)	54.05	27.03	13.51	2.70	2.7
Solano (n=25)	68.00	8.00	12.00	8.00	4.00
Sonoma (n=46)	63.04	23.91	10.87	2.17	-
Yolo (n=16)	50.00	37.50	6.25	-	6.25
TOTAL (N=1001)	54.95	25.67	12.19	5.09	2.10

Q9. Where do you keep your boat during the boating or fishing season?

REGION:	On a trailer	At land-based storage facility	In a marina slip	At a mooring	Somewhere else	Refused
SF Bay (n=230)	43.91	16.52	22.17	3.91	13.48	-
SF Delta (n=271)	50.92	20.30	18.45	2.21	7.75	0.37
Southern CA (n=269)	52.42	18.96	15.99	5.20	7.43	-
Los Angeles (n=231)	42.86	16.02	26.84	3.90	10.39	-
COUNTY:						
Alameda (n=75)	45.33	12.00	30.67	1.33	10.67	-
Contra Costa (n=86)	37.21	22.09	26.74	2.33	10.47	1.16
Los Angeles (n=231)	42.86	16.02	26.84	3.90	10.39	-
Marin (n=32)	21.88	12.50	40.62	6.25	18.75	-
Napa (n=14)	50.00	21.43	-	-	28.57	-
Orange (n=131)	48.85	18.32	14.50	8.40	9.92	-
Sacramento (n=106)	55.66	23.58	9.43	1.89	9.43	-
San Diego (n=138)	55.80	19.57	17.39	2.17	5.07	-
San Francisco (n=15)	46.67	6.67	33.33	6.67	6.67	-
San Joaquin (n=38)	52.63	18.42	26.32	2.63	-	-
San Mateo (n=11)	36.36	9.09	36.36	9.09	9.09	-
Santa Clara (n=37)	51.35	16.22	10.81	5.41	16.22	-
Solano (n=25)	60.00	16.00	12.00	4.00	8.00	-
Sonoma (n=46)	50.00	30.43	4.35	4.35	10.87	-
Yolo (n=16)	75.00	-	25.00	-	-	-
TOTAL (N=1001)	47.85	18.08	20.58	3.80	9.59	0.10

Q11. Where do you usually use your boat?

REGION:	Inland lakes	Rivers	the Coast	San Francisco Bay	San Francisco Delta	Somewhere else
SF Bay (n=230)	45.65	3.04	9.57	26.96	10.00	4.78
SF Delta (n=271)	36.16	16.97	4.06	11.81	21.03	9.23
Southern CA (n=269)	36.43	8.18	44.98	-	-	10.41
Los Angeles (n=231)	49.78	7.79	36.36	-	-	5.63
COUNTY:						
Alameda (n=75)	44.00	6.67	2.67	21.33	20.00	5.33
Contra Costa (n=86)	29.07	9.30	3.49	16.28	32.56	9.30
Los Angeles (n=231)	49.78	7.79	36.36	-	-	5.63
Marin (n=32)	18.75	3.12	15.62	50.00	3.12	9.38
Napa (n=14)	78.57	-	14.29	-	7.14	
Orange (n=131)	41.98	13.74	28.24	-	-	16.03
Sacramento (n=106)	51.89	25.47	3.77	2.83	13.21	0.94
San Diego (n=138)	31.16	2.90	60.87	-	-	5.07
San Francisco (n=15)	20.00	-	-	80.00	-	-
San Joaquin (n=38)	7.89	13.16	-	18.42	31.58	28.95
San Mateo (n=11)	27.27	-	-	54.55	9.09	9.09
Santa Clara (n=37)	56.76	-	5.41	16.22	13.51	8.11
Solano (n=25)	36.00	4.00	12.00	24.00	4.00	20.00
Sonoma (n=46)	60.87	2.17	23.91	13.04	-	-
Yolo (n=16)	37.50	31.25	6.25	12.50	12.50	-
TOTAL (N=1001)	41.56	9.29	23.78	9.39	7.99	7.69

Q13. Do you change the boat oil yourself?

REGION:	Yes	No	Boat does not use oil
SF Bay (n=230)	52.17	18.26	29.57
SF Delta (n=271)	57.20	13.28	29.52
Southern CA (n=269)	57.25	17.10	25.65
Los Angeles (n=231)	48.92	17.75	33.33
COUNTY:			
Alameda (n=75)	56.00	28.00	16.00
Contra Costa (n=86)	50.00	19.77	30.23
Los Angeles (n=231)	48.92	17.75	33.33
Marin (n=32)	43.75	18.75	37.50
Napa (n=14)	50.00	14.29	35.71
Orange (n=131)	58.02	22.14	19.85
Sacramento (n=106)	58.49	13.21	28.30
San Diego (n=138)	56.52	12.32	31.16
San Francisco (n=15)	33.33	20.00	46.67
San Joaquin (n= 38)	60.53	10.53	28.95
San Mateo (n=11)	81.82	9.09	9.09
Santa Clara (n=37)	59.46	8.11	32.43
Solano (n=25)	64.00	4.00	32.00
Sonoma (n=46)	45.65	13.04	41.30
Yolo (n=16)	68.75	-	31.25
TOTAL (N=1001)	54.14	16.48	29.39

Q14. How do you have your oil changed?

REGION:	Hire Someone	Boat Yard	Someone Else
SF Bay (n=44)	31.82	54.55	13.64
SF Delta (n=37)	21.62	37.84	40.62
Southern CA (n=49)	46.94	30.61	22.45
Los Angeles (n=45)	35.56	46.67	17.78
COUNTY:			
Alameda (n=23)	21.74	60.87	17.39
Contra Costa (n=18)	16.67	61.11	22.22
Los Angeles (n=45)	35.56	46.67	17.78
Marin (n=6)	50.00	50.00	-
Napa (n=2)	50.00	-	50.00
Orange (n=31)	51.61	25.81	22.58
Sacramento (n=14)	28.57	14.29	57.14
San Diego (n=18)	38.89	38.89	22.22
San Francisco (n=3)	33.33	66.67	-
San Joaquin (n= 4)	25.00	25.00	50.00
San Mateo (n=1)	100.00	-	-
Santa Clara (n=3)	33.33	66.67	-
Solano (n=1)	-	-	100.00
Sonoma (n=6)	33.33	50.00	16.67
Yolo (n=0)	-	-	-
TOTAL (N=1001)	34.86	42.29	22.86

Q156. Where do you have the oil changed?

REGION:	Home	Marina	Somewhere Else
SF Bay (n= 118)	72.03	22.03	5.93
SF Delta (n=154)	74.03	18.83	7.14
Southern CA (n=151)	72.19	23.18	4.64
Los Angeles (n=231)	69.72	24.77	5.50
COUNTY:			
Alameda (n=40)	55.00	37.50	7.50
Contra Costa (n=42)	71.43	21.43	7.14
Los Angeles (n=109)	69.72	24.77	5.50
Marin (n=14)	42.86	42.86	14.29
Napa (n=7)	100.00	-	-
Orange (n=74)	72.97	24.32	2.70
Sacramento (n=62)	77.42	14.52	8.06
San Diego (n=77)	71.43	22.08	6.49
San Francisco (n=5)	60.00	40.00	-
San Joaquin (n=23)	69.57	26.09	4.35
San Mateo (n=9)	100.00	-	-
Santa Clara (n=22)	90.91	9.09	-
Solano (n=16)	75.00	12.50	12.50
Sonoma (n=21)	85.71	4.76	9.52
Yolo (n=11)	72.73	27.27	-
TOTAL (N=175)	34.86	42.29	22.86

Q16. When you change the oil, do you...

REGION:	Use an oil pump	Drain the oil into your bilge	Drain the oil into a closed container	Drain the oil into an open container	Do something else
SF Bay (n=118)	27.12	0.85	48.31	19.49	4.24
SF Delta (n=154)	32.47	2.60	35.71	18.83	10.39
Southern CA (n=151)	19.87	3.97	39.74	31.79	4.64
Los Angeles (n=109)	29.36	-	44.04	19.27	7.34
COUNTY:					
Alameda (n=40)	20.00	-	50.00	25.00	5.00
Contra Costa (n=42)	45.24	7.14	30.95	16.67	
Los Angeles (n=109)	29.36	-	44.04	19.27	7.34
Marin (n=14)	42.86	7.14	28.57	21.43	-
Napa (n=7)	28.57	-	71.43	-	-
Orange (n=74)	21.62	8.11	43.24	20.27	6.76
Sacramento (n=62)	22.58	1.61	43.55	14.52	17.74
San Diego (n=77)	18.18	-	36.36	42.86	2.60
San Francisco (n=5)	60.00	-	20.00	20.00	-
San Joaquin (n=23)	47.83	-	34.78	13.04	4.35
San Mateo (n=9)	22.22	-	77.78	-	-
Santa Clara (n=22)	22.73	-	54.55	22.73	-
Solano (n=16)	-	-	25.00	50.00	25.00
Sonoma (n=21)	28.57	-	38.10	19.05	14.29
Yolo (n=11)	54.55	-	27.27	18.18	-
TOTAL (N=532)	27.07	2.07	41.35	22.74	6.77

Q18. How do you normally dispose of your used oil?

REGION:	In the trash or garbage dump	In the used oil container at the marina	Pump it out of the bilge	Save it for later	Take it to an oil collection center (gas station/ auto store)	Take it to a household hazardous waste collection center	Other
SF Bay (n= 118)	0.85	7.63	-	-	66.95	12.71	6.78
SF Delta (n=154)	1.30	6.49	0.65	-	57.14	19.48	9.74
Southern CA (n=151)	1.99	4.64	-	-	68.21	17.22	6.62
Los Angeles (n=109)	0.92	11.93	-	-	57.80	18.35	11.01
COUNTY:							
Alameda (n=40)	2.50	10.00	-	-	65.00	17.50	-
Contra Costa (n=42)	-	14.29	-		57.14	26.19	2.38
Los Angeles (n=109)	0.92	11.93	-	-	57.80	18.35	11.01
Marin (n=14)	-	-	-	-	85.71	7.14	7.14
Napa (n=7)	-	-	-	-	71.43	14.29	14.29
Orange (n=74)	-	1.35	-	-	74.32	17.57	5.41
Sacramento (n=62)	1.61	1.61	1.61		53.23	16.13	19.35
San Diego (n=77)	3.90	7.79	-	-	62.34	16.88	7.79
San Francisco (n=5)	-	20.00	-	-	80.00	-	-
San Joaquin (n=23)	-	4.35	-	-	78.26	13.04	4.35
San Mateo (n=9)	-	-	-	-	22.22	44.44	33.33
Santa Clara (n=22)	-	13.64	-	-	68.18	9.09	4.55
Solano (n=16)	6.25	6.25	-	-	50.00	18.75	6.25
Sonoma (n=21)	-	4.76	-	-	71.43	-	14.29
Yolo (n=11)	-	9.09	-	-	45.45	27.27	-
TOTAL (N=532)	1.32	7.33	0.19	-	62.59	17.11	8.46

Q20. Do you think the way that you dispose of boat oil poses no risk, only a slight risk, a moderate risk, or a great risk to the environment?

REGION:	No risk	Only a slight risk	A moderate risk	A great risk	Don't know	Refused
SF Bay (n=118)	88.14	8.47	1.69	-	1.69	-
SF Delta (n=154)	85.06	7.79	0.65	1.30	0.65	-
Southern CA (n=151)	79.47	11.92	2.65	1.32	2.65	1.99
Los Angeles (n=109)	79.82	7.34	5.50	-	3.67	3.67
COUNTY:						
Alameda (n=40)	87.50	12.50	-	-	-	-
Contra Costa (n=42)	88.10	11.90	-	-	-	-
Los Angeles (n=109)	79.82	7.34	5.50	-	3.67	3.67
Marin (n=14)	92.86	7.14	-	-	-	-
Napa (n=7)	100.00	-	-	-	-	-
Orange (n=74)	75.68	12.16	4.05	1.35	4.05	2.70
Sacramento (n=62)	83.87	4.84	1.61	-	8.06	1.61
San Diego (n=77)	83.12	11.69	1.30	1.30	1.30	1.30
San Francisco (n=5)	80.00	-	-	-	20.00	-
San Joaquin (n=23)	95.65	4.35	-	-	-	-
San Mateo (n=9)	88.89	11.11	-	-	-	-
Santa Clara (n=22)	95.45	-	-	-	4.55	-
Solano (n=16)	68.75	12.50	-	12.50	6.25	-
Sonoma (n=21)	76.19	14.29	9.52	-	-	-
Yolo (n=11)	81.82	9.09	-	-	9.09	-
TOTAL (N=532)	83.08	9.02	2.44	0.75	3.20	1.50

Q21. How do you normally dispose of used oil filters?

REGION:	At the marina collection area	In the trash or garbage dump	Save it for later	Take it to an oil collection center (gas station/auto store)	Take it to a household hazardous waste collection center	Other
SF Bay (n=118)	3.39	33.05	-	34.75	7.63	12.71
SF Delta (n=154)	3.90	32.47	1.30	24.03	14.94	12.34
Southern CA (n=151)	3.97	37.09	0.66	24.50	14.57	12.58
Los Angeles (n=109)	7.34	33.03	-	28.44	13.76	8.26
COUNTY:						
Alameda (n=40)	5.00	40.00	-	32.50	5.00	10.00
Contra Costa (n=42)	4.76	28.57	-	26.19	23.81	9.52
Los Angeles (n=109)	7.34	33.03	-	28.44	13.76	8.26
Marin (n=14)	-	14.29	-	50.00	7.14	-
Napa (n=7)	-	57.14	-	14.29	14.29	14.29
Orange (n=74)	1.35	43.24	-	24.32	14.86	12.16
Sacramento (n=62)	-	38.71	3.23	17.74	9.68	17.74
San Diego (n=77)	6.49	31.17	1.30	24.68	14.29	12.99
San Francisco (n=5)	-	60.00	-	20.00	-	20.00
San Joaquin (n=23)	4.35	30.43	-	39.13	17.39	4.35
San Mateo (n=9)	11.11	11.11	-	-	33.33	33.33
Santa Clara (n=22)	-	22.73	-	45.45	9.09	22.73
Solano (n=16)	12.50	31.25	-	12.50	-	18.75
Sonoma (n=21)	4.76	38.10	-	42.86	-	4.76
Yolo (n=11)	9.09	18.18	-	36.36	27.27	-
TOTAL (N=532)	4.51	34.02	0.56	27.44	12.97	11.65

Q23. Do you think the way that you dispose of oil filters poses no risk, only a slight risk, a moderate risk or a great risk to the environment?

REGION:	No risk	Only a slight risk	A moderate risk	A great risk	Don't know	Refused
SF Bay (n=118)	55.93	23.73	6.78	-	13.56	-
SF Delta (n=154)	53.90	22.08	3.25	0.65	16.23	3.90
Southern CA (n=151)	50.99	33.77	2.65	0.66	9.27	2.65
Los Angeles (n=109)	55.96	19.27	8.26	-	10.09	6.42
COUNTY:						
Alameda (n=40)	45.00	27.50	7.50	-	20.00	-
Contra Costa (n=42)	61.90	21.43	2.38	-	14.29	-
Los Angeles (n=109)	55.96	19.27	8.26	-	10.09	6.42
Marin (n=14)	57.14	14.29	-	-	28.57	
Napa (n=7)	57.14	28.57	14.29	-	-	-
Orange (n=74)	37.84	48.65	1.35		8.11	4.05
Sacramento (n=62)	50.00	24.19	3.23	-	16.13	6.45
San Diego (n=77)	63.64	19.48	3.90	1.30	10.39	1.30
San Francisco (n=5)	40.00	20.00	-	-	40.00	-
San Joaquin (n=23)	69.57	17.39	4.35	-	8.70	-
San Mateo (n=9)	88.89	11.11	-	-	-	-
Santa Clara (n=22)	68.18	22.73	4.55	-	4.55	-
Solano (n=16)	37.50	12.50	6.25	6.25	25.00	12.50
Sonoma (n=21)	52.38	28.57	14.29	-	4.76	-
Yolo (n=11)	36.36	36.36	-	-	27.27	-
TOTAL (N=532)	53.95	25.19	4.89	0.38	12.41	3.20

Q24-34. Now, I'm going to read a list of reasons why some boaters don't recycle their used oil. For each item I mention, please tell me whether it is a reason why you have not recycled your used boat oil.

REGION:	I never considered recycling it	I don't know where to take it	There is no place to recycle oil near my house	The hazardous waste recycling facility is too inconvenient to use	I don't think there's anything wrong with throwing oil in the trash	I don't think there's anything wrong with pumping it out from the bilge	There is no place to recycle oil at the marina where I keep my boat	The marina recycling facility is too inconvenient to use	Is there a reason why you have not recycled your used boat oil that I did not mention?
SF Bay (n=39)	17.95	9.38	9.38	12.50	21.88	15.38	15.62	4.76	12.50
SF Delta (n=44)	27.27	25.00	21.88	12.50	18.75	21.05	21.88	-	9.38
Southern CA (n=36)	25.00	14.81	25.93	70.37	18.52	20.00	11.11	11.76	29.63
Los Angeles (n=28)	39.29	23.53	23.53	5.88	23.53	11.11	11.76	-	11.76
COUNTY:									
Alameda (n=21)	23.81	6.25	-	6.25	25.00	20.00	6.25	6.67	-
Contra Costa (n=13)	30.77	33.33	22.22	11.11	22.22	14.29	11.11	-	-
Los Angeles (n=28)	39.29	23.53	23.53	5.88	23.53	11.11	11.76	-	11.76
Marin (n=3)	66.67	33.33	-	33.33	33.33	-	33.33	-	33.33
Napa (n=0)	-	-	-	-	-	-	-	-	-
Orange (n=14)	42.86	-	12.50	-	-	14.29	-	-	50.00
Sacramento (n=11)	45.45	33.33	-	16.67	16.67	50.00	33.33	-	16.67
San Diego (n=22)	13.64	21.05	31.58	26.32	26.32	25.00	15.79	18.18	21.05
San Francisco (n=0)	-	-	-	-	-	-	-	-	-
San Joaquin (n=10)	20.00	12.50	12.50	25.00	25.00	20.00	37.50	-	-
San Mateo (n=3)	-	-	33.33	-	33.33	-	33.33	-	-
Santa Clara (n=6)	33.33	25.00	25.00	25.00	-	-	25.00	-	50.00
Solano (n=7)	14.29	16.67	33.33	-	-	25.00	16.67	-	16.67
Sonoma (n=6)	-	-	16.67	16.67	16.67	-	16.67	-	16.67
Yolo (n=3)	-	33.33	66.67	-	33.33	-	66.67	-	33.33
TOTAL (N=)	26.53	17.59	19.44	12.96	20.37	17.86	15.74	4.84	15.74

Q 35-41. Next I am going to read a list of factors that might influence people to recycle their used oil. As I read each one, please tell me whether it would be very significant, significant, somewhat significant, or not significant at all in impacting your decision to recycle used oil.

Q36. You knew that used oil is a hazardous waste.

REGION:	Very significant	Significant	Somewhat significant	Not significant at all	Don't know	Refused
SF Bay (n=230)	68.70	21.30	5.22	3.04	1.30	0.43
SF Delta (n=271)	62.73	23.62	5.17	4.80	0.37	3.32
Southern CA (n=269)	55.02	29.00	3.72	7.06	2.60	2.60
Los Angeles (n=231)	64.50	20.35	4.33	6.49	3.03	1.30
COUNTY:						
Alameda (n=75)	70.67	20.00	5.33	2.67	-	1.33
Contra Costa (n=86)	68.60	20.93	2.33	5.81	-	2.33
Los Angeles (n=231)	64.50	20.35	4.33	6.49	3.03	1.30
Marin (n=32)	71.88	15.62	9.38	3.12	-	-
Napa (n=14)	78.57	21.43	-	-	-	-
Orange (n=131)	51.15	29.77	3.82	10.69	1.53	3.05
Sacramento (n=106)	57.55	27.36	5.66	2.83	0.94	5.66
San Diego (n=138)	58.70	28.26	3.62	3.62	3.62	2.17
San Francisco (n=15)	73.33	13.33	6.67	6.67	-	-
San Joaquin (n=38)	60.53	23.68	5.26	10.53	-	-
San Mateo (n=11)	63.64	36.36	-	-	-	-
Santa Clara (n=37)	70.27	21.62	8.11	-	-	-
Solano (n=25)	68.00	16.00	8.00	4.00		4.00
Sonoma (n=46)	58.70	26.09	2.17	6.52	6.52	-
Yolo (n=16)	62.50	25.00	12.50	-	-	-
TOTAL (N=1001)	62.44	23.78	4.60	5.39	1.80	2.00

Q37. You found out that there was an oil recycling center near your home.

REGION:	Very significant	Significant	Somewhat significant	Not significant at all	Don't know	Refused
SF Bay (n=230)	65.65	20.87	4.35	7.39	1.30	0.43
SF Delta (n=271)	55.72	26.94	2.95	9.96	1.48	2.95
Southern CA (n=269)	52.04	22.68	7.43	10.04	5.20	2.60
Los Angeles (n=231)	60.61	16.45	5.19	12.55	3.46	1.73
COUNTY:						
Alameda (n=75)	68.00	20.00	5.33	5.33	-	1.33
Contra Costa (n=86)	60.47	22.09	3.49	10.47	1.16	2.33
Los Angeles (n=231)	60.61	16.45	5.19	12.55	3.46	1.73
Marin (n=32)	59.38	15.62	3.12	15.62	6.25	-
Napa (n=14)	78.57	14.29	-	7.14	-	-
Orange (n=131)	54.20	19.85	10.69	9.92	2.29	3.05
Sacramento (n=106)	52.83	26.42	0.94	12.26	1.89	5.66
San Diego (n=138)	50.00	25.36	4.35	10.14	7.97	2.17
San Francisco (n=15)	66.67	20.00	-	13.33	-	-
San Joaquin (n=38)	47.37	36.84	7.89	7.89	-	-
San Mateo (n=11)	63.64	18.18	-	18.18	-	-
Santa Clara (n=37)	70.27	24.32	5.41	-	-	-
Solano (n=25)	56.00	36.00	-	4.00	4.00	-
Sonoma (n=46)	58.70	26.09	6.52	6.52	2.17	-
Yolo (n=16)	68.75	18.75	6.25	6.25	-	-
TOTAL (N=1001)	58.14	21.98	5.00	9.99	2.90	2.00

Q38. There was an oil recycling program at your marina.

REGION:	Very significant	Significant	Somewhat significant	Not significant at all	Don't know	Refused
SF Bay (n=230)	43.04	20.43	2.61	29.57	3.48	0.87
SF Delta (n=271)	36.53	17.34	10.33	27.68	4.80	3.32
Southern CA (n=269)	37.55	20.07	4.09	25.28	10.41	2.60
Los Angeles (n=231)	44.16	16.02	6.93	23.81	7.36	1.73
COUNTY:						
Alameda (n=75)	38.67	21.33	1.33	29.33	8.00	1.33
Contra Costa (n=86)	43.02	12.79	16.28	22.09	3.49	2.33
Los Angeles (n=231)	44.16	16.02	6.93	23.81	7.36	1.73
Marin (n=32)	50.00	12.50	-	34.38	-	3.12
Napa (n=14)	57.14	14.29	-	28.57	-	-
Orange (n=131)	34.35	23.66	2.29	27.48	9.16	3.05
Sacramento (n=106)	29.25	20.75	7.55	32.08	4.72	5.66
San Diego (n=138)	40.58	16.67	5.80	23.19	11.59	2.17
San Francisco (n=15)	40.00	26.67	-	33.33	-	-
San Joaquin (n=38)	31.58	18.42	10.53	34.21	5.26	-
San Mateo (n=11)	81.82	9.09	-	-	9.09	-
Santa Clara (n=37)	43.24	18.92	5.41	32.43	-	-
Solano (n=25)	40.00	16.00	-	28.00	12.00	4.00
Sonoma (n=46)	32.61	28.26	6.52	30.43	2.17	-
Yolo (n=)	56.25	18.75	12.50	12.50	-	-
TOTAL (N=1001)	40.06	18.48	6.09	26.57	6.59	2.20

Q39. You thought it would be better for the environment.

REGION:	Very significant	Significant	Somewhat significant	Not significant at all	Don't know	Refused
SF Bay (n=230)	69.13	21.74	4.78	1.30	2.61	0.43
SF Delta (n=271)	63.10	28.78	1.48	2.58	1.11	2.95
Southern CA (n=269)	57.99	26.77	2.60	7.06	2.97	2.60
Los Angeles (n=231)	64.94	19.91	5.19	4.76	3.90	1.30
COUNTY:						
Alameda (n=75)	68.00	21.33	5.33	-	4.00	1.33
Contra Costa (n=86)	68.60	24.42	1.16	3.49	-	2.33
Los Angeles (n=231)	64.94	19.91	5.19	4.76	3.90	1.30
Marin (n=32)	78.12	12.50	3.12	3.12	3.12	-
Napa (n=14)	85.71	14.29	-	-	-	-
Orange (n=131)	54.96	28.24	3.05	9.92	0.76	3.05
Sacramento (n=106)	62.26	25.47	1.89	1.89	2.83	5.66
San Diego (n=138)	60.87	25.36	2.17	4.35	5.07	2.17
San Francisco (n=15)	80.00	20.00	-	-	-	-
San Joaquin (n=38)	50.00	44.74	-	5.26	-	-
San Mateo (n=11)	63.64	36.36	-	-	-	-
Santa Clara (n=37)	59.46	35.14	5.41	-	-	-
Solano (n=25)	72.00	28.00	-	-	-	-
Sonoma (n=46)	65.22	17.39	8.70	4.35	4.35	-
Yolo (n=16)	56.25	37.50	6.25	-	-	-
TOTAL (N=1001)	63.54	24.58	3.40	4.00	2.60	1.90

Q40. You knew it was illegal to dispose of it in the trash, storm drain or ground.

REGION:	Very significant	Significant	Somewhat significant	Not significant at all	Don't know	Refused
SF Bay (n=230)	69.13	15.65	7.39	6.96	0.43	0.43
SF Delta (n=271)	66.42	19.19	4.43	5.54	1.48	2.95
Southern CA (n=269)	65.06	19.70	4.09	5.95	2.60	2.60
Los Angeles (n=231)	68.83	16.45	4.76	4.76	4.33	0.87
COUNTY:						
Alameda (n=75)	78.67	10.67	5.33	4.00	-	1.33
Contra Costa (n=86)	67.44	16.28	4.65	9.30	-	2.33
Los Angeles (n=231)	68.83	16.45	4.76	4.76	4.33	0.87
Marin (n=32)	68.75	12.50	3.12	15.62	-	-
Napa (n=14)	64.29	21.43	7.14	7.14	-	-
Orange (n=131)	66.41	24.43	2.29	3.05	0.76	3.05
Sacramento (n=106)	64.15	20.75	5.66	0.94	2.83	5.66
San Diego (n=138)	63.77	15.22	5.80	8.70	4.35	2.17
San Francisco (n=15)	66.67	26.67	6.67	-	-	-
San Joaquin (n=38)	60.53	21.05	5.26	10.53	2.63	-
San Mateo (n=11)	36.36	18.18	27.27	18.18	-	-
Santa Clara (n=37)	75.68	18.92	5.41	-	-	
Solano (n=25)	72.00	20.00	-	8.00	-	-
Sonoma (n=46)	58.70	17.39	10.87	10.87	2.17	-
Yolo (n=16)	81.25	18.75	-	-	-	-
TOTAL (N=1001)	67.23	17.88	5.09	5.79	2.20	1.80

Q41. You thought that all of your friends recycle their used oil.

REGION:	Very significant	Significant	Somewhat significant	Not significant at all	Don't know	Refused
SF Bay (n=230)	39.13	16.96	9.13	29.57	4.78	0.43
SF Delta (n=270)	36.90	23.62	9.96	21.77	4.80	2.95
Southern CA (n=269)	25.65	15.99	8.55	37.55	9.67	2.60
Los Angeles (n=231)	34.63	16.45	9.96	30.30	7.36	1.30
COUNTY:						
Alameda (n=75)	44.00	9.33	10.67	28.00	6.67	1.33
Contra Costa (n=86)	34.88	32.56	9.30	17.44	3.49	2.33
Los Angeles (n=231)	34.63	16.45	9.96	30.30	7.36	1.30
Marin (n=32)	34.38	18.75	6.25	37.50	3.12	-
Napa (n=14)	42.86	21.43	-	28.57	7.14	-
Orange (n=131)	21.37	15.27	9.16	43.51	7.63	3.05
Sacramento (n=106)	35.85	20.75	8.49	24.53	4.72	5.66
San Diego (n=138)	29.71	16.67	7.97	31.88	11.59	2.17
San Francisco (n=15)	66.67	6.67	13.33	6.67	6.67	-
San Joaquin (n=38)	47.37	13.16	15.79	23.68	-	-
San Mateo (n=11)	18.18	36.36	-	45.45	-	-
Santa Clara (n=37)	24.32	27.03	13.51	29.73	5.41	-
Solano (n=25)	40.00	24.00	4.00	16.00	16.00	-
Sonoma (n=46)	41.30	17.39	8.70	30.43	2.17	-
Yolo (n=16)	25.00	18.75	18.75	31.25	6.25	-
TOTAL (N=1001)	33.87	18.38	9.39	29.77	6.69	1.90

Q42. Do you ever notice oil in the bottom of your boat or bilge?

REGION:	Yes	No	Don't know	Refused
SF Bay (n=162)	16.05	83.33	0.62	-
SF Delta (n=191)	15.71	82.72	1.57	-
Southern CA (n=200)	11.00	86.00	1.50	1.50
Los Angeles (n=154)	22.73	76.62	0.65	-
COUNTY:				
Alameda (n=63)	12.70	87.30	-	-
Contra Costa (n=60)	18.33	81.67	-	-
Los Angeles (n=154)	22.73	76.62	0.65	-
Marin (n=20)	20.00	80.00	-	-
Napa (n= 9)	11.11	88.89	-	-
Orange (n=105)	12.38	82.86	1.90	2.86
Sacramento (n=76)	14.47	81.58	-	3.95
San Diego (n=95)	9.47	89.47	1.05	-
San Francisco (n=8)	25.00	75.00	-	-
San Joaquin (n=27)	22.22	77.78	-	-
San Mateo (n=10)	10.00	90.00	-	-
Santa Clara (n=25)	28.00	68.00	4.00	-
Solano (n=17)	11.76	88.24	-	-
Sonoma (n=27)	11.11	88.89	-	-
Yolo (n=11)	-	100.00	-	-
TOTAL (N=707)	15.98	82.46	0.71	0.85

Q43. How do you clean oil that has spilled into the bottom of your boat or bilge?

REGION:	I don't do anything	Oil-absorbent pads	Rags or paper-towels	A bilge pump-out facility	Detergent or soap	Bilge cleaners	Automatic bilge pump	Sewage pump-out facility	Other
SF Bay (n=26)	-	34.62	23.08	3.85	11.54	3.85	3.85	-	19.23
SF Delta (n=30)	-	33.33	20.00	3.33	23.33		3.33	-	16.67
Southern CA (n=22)	-	18.18	9.09	13.64	9.09	18.18	4.55	-	27.27
Los Angeles (n=35)	2.86	28.57	34.29	17.14	8.57	2.86	2.86	-	2.86
COUNTY:									
Alameda (n= 8)	-	62.50	25.00	-	12.50	-	-	-	-
Contra Costa (n=11)	-	54.55	27.27	-	18.18	-	-	-	-
Los Angeles (n=35)	2.86	28.57	34.29	17.14	8.57	2.86	2.86	-	2.86
Marin (n= 4)	-	25.00	-	-	25.00	-	25.00	-	25.00
Napa (n=1)	-	-	-	-		-	-	-	100.00
Orange (n=13)	-	7.69	15.38	23.08	15.38	15.38	-	-	23.08
Sacramento (n=11)	-	-	27.27	-	45.45	-	-	-	27.27
San Diego (n=9)	-	33.33	-	-	-	22.22	11.11	-	33.33
San Francisco (n=2)	-	-	-	-	-	50.00	-	-	50.00
San Joaquin (n=6)	-	66.67	-	-	-	-	16.67	-	16.67
San Mateo (n=1)	-	100.00	-	-	-	-	-	-	-
Santa Clara (n=7)	-	28.57	42.86	-	-	14.29	-	-	14.29
Solano (n=2)	-	-	-	50.00	-	-	-	-	50.00
Sonoma (n=3)	-	-	33.33	33.33	-	-	-	-	33.33
Yolo (n=0)	-	-	-	-	-	-	-	-	-
TOTAL (N=113)	0.88	31.86	26.55	8.85	9.73	5.31	1.77	-	15.04

Q45. Do you think that not doing anything poses no risk, only a slight risk, a moderate risk or a great risk to the environment?

REGION:	No risk	Only a slight risk	A moderate risk	A great risk	Don't know	Refused
SF Bay (n=26)	42.31	30.77	19.23	-	3.85	3.85
SF Delta (n=30)	43.33	40.00	6.67	6.67	-	3.33
Southern CA (n=22)	27.27	54.55	18.18	-	-	-
Los Angeles (n=34)	38.24	38.24	14.71	-	5.88	2.94
COUNTY:						
Alameda (n=8)	25.00	25.00	37.50	-	12.50	-
Contra Costa (n=11)	63.64	27.27	9.09	-	-	-
Los Angeles (n=34)	38.24	38.24	14.71	-	5.88	2.94
Marin (n=4)	25.00	75.00	-	-	-	-
Napa (n=1)	100.00	-	-	-	-	-
Orange (n=13)	23.08	69.23	7.69	-	-	-
Sacramento (n=11)	36.36	45.45	-	9.09	-	9.09
San Diego (n=9)	33.33	33.33	33.33	-	-	-
San Francisco (n=2)	100.00	-	-	-	-	-
San Joaquin (n=6)	33.33	50.00	16.67	-	-	-
San Mateo (n=1)	-	100.00	-	-	-	-
Santa Clara (n=7)	42.86	28.57	14.29	-	-	14.29
Solano (n=2)	-	50.00	-	50.00	-	-
Sonoma (n=3)	66.67	33.33	-	-	-	-
Yolo (n=0)	-	-	-	-	-	-
TOTAL (N=112)	38.39	40.18	14.29	1.79	2.68	2.68

Q46. How do you usually dispose of the oil-absorbent pads?

REGION:	At the marina collection	In the trash or garbage dump	Put it in recycling bins	Save it for later	Take it to a household hazardous waste collection center	Other
SF Bay (n=9)	-	44.44	22.22	11.11	-	22.22
SF Delta (n=11)	9.09	9.09	18.18	-	45.45	18.18
Southern CA (n=4)	25.00	25.00	-	-	50.00	-
Los Angeles (n=12)	66.67	25.00	-	-	8.33	-
COUNTY:						
Alameda (n=5)	-	20.00	20.00	20.00	-	40.00
Contra Costa (n=6)	16.67	16.67	-	-	66.67	-
Los Angeles (n=12)	-	66.67	25.00	-	8.33	-
Marin (n=1)	-	100.00	-	-	-	-
Napa (n=0)	-	-	-	-	-	-
Orange (n=1)	-	100.00	-	-	-	-
Sacramento (n=0)	-	-	-	-	-	-
San Diego (n=3)	33.33	-	-	-	66.67	-
San Francisco (n=0)	-	-	-	-	-	-
San Joaquin (n=5)	-	-	40.00	-	20.00	40.00
San Mateo (n=1)	-	100.00	-	-	-	-
Santa Clara (n=2)	-	50.00	50.00	-	-	-
Solano (n=0)	-	-	-	-	-	-
Sonoma (n=0)	-	-	-	-	-	-
Yolo (n=0)	-	-	-	-	-	-
TOTAL (N=36)	5.56	38.89	19.44	2.78	22.22	11.11

Q 48. Do you think that using oil-absorbent pads to clean oil from the bottom of your boat or bilge poses no risk, only a slight risk, a moderate risk or a great risk to the environment?

REGION:	No risk	Only a slight risk	A moderate risk	A great risk	Don't know	Refused
SF Bay (n=9)	11.11	55.56	22.22	-	11.11	-
SF Delta (n=11)	63.64	27.27	9.09	-		
Southern CA (n=4)	50.00	50.00	-	-	-	-
Los Angeles (n=12)	33.33	50.00	16.67	-	-	-
COUNTY:						
Alameda (n=5)	-	60.00	20.00	-	20.00	-
Contra Costa (n=6)	83.33	16.67	-	-	-	-
Los Angeles (n=12)	33.33	50.00	16.67	-	-	-
Marin (n=1)	-	100.00	-	-	-	-
Napa (n=0)	-	-	-	-	-	-
Orange (n=1)	100.00	-	-	-	-	-
Sacramento (n=0)	-	-	-	-	-	-
San Diego (n=3)	33.33	66.67	-	-	-	-
San Francisco (n=0)	-	-	-	-	-	-
San Joaquin (n=5)	40.00	40.00	20.00	-	-	-
San Mateo (n=1)	-	-	100.00	-	-	-
Santa Clara (n=2)	50.00	50.00	-	-	-	-
Solano (n=0)	-	-	-	-	-	-
Sonoma (n=0)	-	-	-	-	-	-
Yolo (n= 0)	-	-	-	-	-	-
TOTAL (N=36)	38.89	44.44	13.89	-	2.78	-

Q49. How do you usually dispose of the rags or paper towels?

REGION:	At the marina collection	In the trash or garbage dump	Put it in recycling bins	Save it for later	Take it to a household hazardous waste collection center	Other
SF Bay (n=7)	-	100.00	-	-	-	-
SF Delta (n=9)	-	66.67	-	-	-	33.33
Southern CA (n=2)	-	100.00	-	-	-	-
Los Angeles (n=12)	8.33	50.00	-	16.67	25.00	-
COUNTY:						
Alameda (n=2)	-	100.00	-	-	-	-
Contra Costa (n=3)	-	-	-	-	-	100.00
Los Angeles (n=12)	8.33	50.00	-	16.67	25.00	-
Marin (n=0)	-	-	-	-	-	-
Napa (n=0)	-	-	-	-	-	-
Orange (n=2)	-	100.00	-	-	-	-
Sacramento (n=6)	-	100.00	-	-	-	-
San Diego (n=0)	-	-	-	-	-	-
San Francisco (n=0)	-	-	-	-	-	-
San Joaquin (n=0)	-	-	-	-	-	-
San Mateo (n=0)	-	-	-	-	-	-
Santa Clara (n=4)	-	100.00	-	-	-	-
Solano (n=0)	-	-	-	-	-	-
Sonoma (n=1)	-	100.00	-	-	-	-
Yolo (n=0)	-	-	-	-	-	-
TOTAL (N=30)	3.33	70.00	-	6.67	10.00	10.00

Q51. Do you think that using rags or paper towels poses no risk, only a slight risk, a moderate risk or a great risk to the environment?

REGION:	No risk	Only a slight risk	A moderate risk	A great risk
SF Bay (n=7)	14.29	57.14	28.57	-
SF Delta (n=9)	55.56	44.44	-	-
Southern CA (n=2)	100.00	-	-	-
Los Angeles (n=12)	66.67	33.33	-	-
COUNTY:				
Alameda (n=2)	-	50.00	50.00	-
Contra Costa (n=3)	100.00	-	-	-
Los Angeles (n=12)	66.67	33.33	-	-
Marin (n=0)	-	-	-	-
Napa (n=0)	-	-	-	-
Orange (n=2)	100.00	-	-	-
Sacramento (n=6)	33.33	66.67	-	-
San Diego (n=0)	-	-	-	-
San Francisco (n=0)	-	-	-	-
San Joaquin (n=0)	-	-	-	-
San Mateo (n=0)	-	-	-	-
Santa Clara (n=4)	25.00	50.00	25.00	-
Solano (n=0)	-	-	-	-
Sonoma (n=1)	-	100.00	-	-
Yolo (n=0)	-	-	-	-
TOTAL (N=30)	53.33	40.00	6.67	-

Q52. Do you think that using a bilge pump-out facility poses no risk, only a slight risk, a moderate risk or a great risk to the environment?

REGION:	No risk	Only a slight risk	A moderate risk	A great risk	Don't know
SF Bay (n=1)	100.00	-	-	-	-
SF Delta (n=3)	-	-	-	-	100.00
Southern CA (n=3)	-	100.00	-	-	-
Los Angeles (n=6)	-	83.33	16.67	-	-
COUNTY:					
Alameda (n=0)	-	-	-	-	-
Contra Costa (n=0)	-	-	-	-	-
Los Angeles (n=6)	-	83.33	16.67	-	-
Marin (n=0)	-	-	-	-	-
Napa (n=0)	-	-	-	-	-
Orange (n=3)	-	100.00	-	-	-
Sacramento (n=0)	-	-	-	-	-
San Diego (n=0)	-	-	-	-	-
San Francisco (n=0)	-	-	-	-	-
San Joaquin (n=0)	-	-	-	-	-
San Mateo (n=0)	-	-	-	-	-
Santa Clara (n=0)	-	-	-	-	-
Solano (n=1)	-	-	-	-	100.00
Sonoma (n=1)	100.00	-	-	-	-
Yolo (n=0)	-	-	-	-	-
TOTAL (N=11)	9.09	72.73	9.09	-	9.09

Q53. Do you think that using detergent or soap poses no risk, a slight risk, a moderate risk or a great risk to the environment?

REGION:	No risk	Only a slight risk	A moderate risk	A great risk
SF Bay (n=3)	33.33	33.33	33.33	-
SF Delta (n=7)	28.57	57.14	14.29	-
Southern CA (n=2)	50.00	50.00	-	-
Los Angeles (n=3)	33.33	66.67	-	-
COUNTY:				
Alameda (n=1)	-	-	100.00	-
Contra Costa (n=2)	50.00	-	50.00	-
Los Angeles (n=3)	33.33	66.67	-	-
Marin (n=1)	-	100.00	-	-
Napa (n=0)	-	-	-	-
Orange (n=2)	-	50.00	50.00	-
Sacramento (n=5)	20.00	80.00	-	-
San Diego (n=0)	-	-	-	-
San Francisco (n=0)	-	-	-	-
San Joaquin (n=0)	-	-	-	-
San Mateo (n=0)	-	-	-	-
Santa Clara (n=1)	100.00	-	-	-
Solano (n=0)	-	-	-	-
Sonoma (n=0)	-	-	-	-
Yolo (n=0)	-	-	-	-
TOTAL (N=15)	26.67	53.33	20.00	-

Q54. Do you think that using bilge cleaners poses no risk, only a slight risk, a moderate risk or a great risk to the environment?

REGION:	No risk	Only a slight risk	A moderate risk	A great risk
SF Bay (n= 1)	100.00	-	-	-
SF Delta (n=0)	-	-	-	-
Southern CA (n=4)	50.00	50.00	-	-
Los Angeles (n=1)	-	100.00	-	-
COUNTY:				
Alameda (n=0)	-	-	-	-
Contra Costa (n=0)	-	-	-	-
Los Angeles (n=1)	-	100.00	-	-
Marin (n=0)	-	-	-	-
Napa (n=0)	-	-	-	-
Orange (n=2)	-	100.00	-	-
Sacramento (n=0)	-	-	-	-
San Diego (n=2)	100.00	-	-	-
San Francisco (n=1)	100.00	-	-	-
San Joaquin (n=0)	-	-	-	-
San Mateo (n=0)	-	-	-	-
Santa Clara (n=0)	-	-	-	-
Solano (n=0)	-	-	-	-
Sonoma (n=0)	-	-	-	-
Yolo (n=0)	-	-	-	-
TOTAL (N=6)	50.00	50.00	-	-

Q55. Do you think that using an automatic bilge pump poses no risk, only a slight risk, a moderate risk or a great risk to the environment.

REGION:	No risk	Only a slight risk	A moderate risk	A great risk
SF Bay (n=1)	-	-	100.00	-
SF Delta (n=1)	-	100.00	-	-
Southern CA (n=1)	-	-	100.00	-
Los Angeles (n=1)	-	-	-	100.00
COUNTY:				
Alameda (n=0)	-	-	-	-
Contra Costa (n=0)	-	-	-	-
Los Angeles (n=1)	-	-	-	100.00
Marin (n=1)	-	-	100.00	-
Napa (n=0)	-	-	-	-
Orange (n=0)	-	-	-	-
Sacramento (n=0)	-	-	-	-
San Diego (n=1)	-	-	100.00	-
San Francisco (n=0)	-	-	-	-
San Joaquin (n=1)	-	100.00	-	-
San Mateo (n=0)	-	-	-	-
Santa Clara (n=0)	-	-	-	-
Solano (n=0)	-	-	-	-
Sonoma (n=0)	-	-	-	-
Yolo (n=0)	-	-	-	-
TOTAL (N=4)	-	25.00	50.00	25.00

Q57. How do you clean oil that has spilled into the water?

REGION:	I never spill oil into the water	I don't do anything	Oil-absorbent pads	Rags or paper towels	Soap or detergents	Other
SF Bay (n=162)	79.01	4.32	4.32	3.70	2.47	6.17
SF Delta (n=191)	78.01	10.99	4.19	-	1.05	5.76
Southern CA (n=200)	70.50	9.00	3.50	6.00	2.50	8.50
Los Angeles (n=154)	77.27	7.14	2.60	0.65	5.84	6.49
COUNTY:						
Alameda (n=63)	79.37	4.76	1.59	3.17	1.59	9.52
Contra Costa (n=60)	80.00	15.00	3.33	-	-	1.67
Los Angeles (n=154)	77.27	7.14	2.60	0.65	5.84	6.49
Marin (n=20)	85.00	5.00	-	5.00	-	5.00
Napa (n=9)	88.89	-	-	-	11.11	-
Orange (n=105)	83.81	5.71	2.86	0.95	0.95	5.71
Sacramento (n=76)	78.95	10.53	2.63	-	1.32	6.58
San Diego (n=95)	55.79	12.63	4.21	11.58	4.21	11.58
San Francisco (n=8)	62.50	12.50	12.50	-	-	12.50
San Joaquin (n=27)	70.37	7.41	11.11	-	-	11.11
San Mateo (n=10)	60.00	-	30.00	-	10.00	-
Santa Clara (n=25)	80.00	8.00	4.00	4.00	4.00	-
Solano (n=17)	76.47	5.88	5.88	-	-	11.76
Sonoma (n=27)	81.48	-	3.70	7.41	-	7.41
Yolo (n=11)	81.82	9.09	-	-	9.09	-
TOTAL (N=707)	75.95	8.06	3.68	2.69	2.83	6.79

Q59. Do you think that this other method poses no risk, a slight risk, a moderate risk, or a great risk to the environment?

REGION:	No risk	Only a slight risk	A moderate risk	A great risk	Don't know
SF Bay (n=7)	-	28.57	28.57	28.57	14.29
SF Delta (n=21)	19.05	23.81	33.33	23.81	-
Southern CA (n=18)	-	27.78	33.33	38.89	-
Los Angeles (n=11)	-	45.45	36.36	18.18	-
COUNTY:					
Alameda (n=6)	33.33	33.33	16.67	16.67	-
Contra Costa (n=1)	100.00	-	-	-	-
Los Angeles (n=10)	20.00	20.00	20.00	20.00	10.00
Marin (n=1)	-	100.00	-	-	-
Napa (n=0)	-	-	-	-	-
Orange (n=6)	16.67	16.67	-	16.67	-
Sacramento (n=5)	20.00	-	-	20.00	-
San Diego (n=11)	9.09	9.09	54.55	9.09	9.09
San Francisco (n=1)	100.00	-	-	-	-
San Joaquin (n=3)	-	33.33	66.67	-	-
San Mateo (n=0)	-	-	-	-	-
Santa Clara (n=0)	-	-	-	-	-
Solano (n=2)	-	50.00	-	50.00	-
Sonoma (n=2)	-	50.00	-	50.00	-
Yolo (n=0)	-	-	-	-	-
TOTAL (N=57)	18.75	20.83	22.92	16.67	4.17

Q60. Do you think that not doing anything about oil spilled into the water poses no risk, only a slight risk, a moderate risk or a great risk to the environment?

REGION:	No risk	Only a slight risk	A moderate risk	A great risk	Don't know
SF Bay (n=7)	-	28.57	28.57	28.57	14.29
SF Delta (n=21)	19.05	23.81	33.33	23.81	-
Southern CA (n=18)	-	27.78	33.33	38.89	-
Los Angeles (n=11)	-	45.45	36.36	18.18	-
COUNTY:					
Alameda (n=3)	-	33.33	66.67	-	-
Contra Costa (n=9)	44.44	22.22	-	33.33	-
Los Angeles (n=11)	-	45.45	36.36	18.18	-
Marin (n=1)	-	-	-	100.00	-
Napa (n=0)	-	-	-	-	-
Orange (n=6)	-	16.67	16.67	66.67	-
Sacramento (n=8)	-	37.50	37.50	25.00	-
San Diego (n=12)	-	33.33	41.67	25.00	-
San Francisco (n=1)	-	-	-	-	100.00
San Joaquin (n=2)	-	-	100.00	-	-
San Mateo (n=0)	-	-	-	-	-
Santa Clara (n=2)	-	50.00	-	50.00	-
Solano (n=1)	-	-	100.00	-	-
Sonoma (n=0)	-	-	-	-	-
Yolo (n=1)	-	-	100.00	-	-
TOTAL (N=57)	7.02	29.82	33.33	28.07	1.75

Q61. How do you usually dispose of the oil absorbent pads?

REGION:	At the marina collection	In the trash or garbage dump	Put it in recycling bins	Save it for later	Take it to a household hazardous waste collection center	Other
SF Bay (n=7)	42.86	14.29	-	-	14.29	28.57
SF Delta (n=8)	12.50	12.50	37.50	-	25.00	12.50
Southern CA (n=7)	28.57	-	14.29	-	28.57	28.57
Los Angeles (n=4)	-	50.00	25.00	-	25.00	-
COUNTY:						
Alameda (n=1)	-	-	-	-	-	100.00
Contra Costa (n=2)	50.00	-	-	-	50.00	-
Los Angeles (n=4)	-	50.00	25.00	-	25.00	-
Marin (n=0)	-	-	-	-	-	-
Napa (n= 0)	-	-	-	-	-	-
Orange (n=3)	-	66.67	-	-	33.33	-
Sacramento (n=2)	-	-	100.00	-	-	-
San Diego (n=4)	-	-	25.00	-	25.00	50.00
San Francisco (n=1)	-	-	-	-	100.00	-
San Joaquin (n=3)	-	33.33	33.33	-	-	33.33
San Mateo (n=3)	100.00	-	-	-	-	-
Santa Clara (n=1)	-	100.00	-	-	-	-
Solano (n=1)	-	-	-	-	100.00	-
Sonoma (n=1)	-	-	-	-	-	100.00
Yolo (n= 0)	-	-	-	-	-	-
TOTAL (N=26)	15.38	23.08	19.23	-	23.08	19.23

Q63. Do you think that using oil-absorbent pads to clean oil from the water poses no risk, only a slight risk, a moderate risk or a great risk to the environment?

REGION:	No risk	Only a slight risk	A moderate risk	A great risk	Don't know	Refused
SF Bay (n=7)	14.29	57.14	-	-	14.29	14.29
SF Delta (n=8)	62.50	25.00	12.50	-	-	-
Southern CA (n=7)	57.14	28.57	14.29	-	-	-
Los Angeles (n=4)	50.00	25.00	-	-	25.00	-
COUNTY:						
Alameda (n=1)	100.00	-	-	-	-	-
Contra Costa (n=2)	50.00	50.00	-	-	-	-
Los Angeles (n=4)	50.00	25.00	-	-	25.00	-
Marin (n=0)	-	-	-	-	-	-
Napa (n=0)	-	-	-	-	-	-
Orange (n=3)	33.33	66.67	-	-	-	-
Sacramento (n=2)	50.00	50.00	-	-	-	-
San Diego (n=4)	75.00	-	25.00	-	-	-
San Francisco (n=1)	-	-	-	-	100.00	-
San Joaquin (n=3)	66.67	-	33.33	-	-	-
San Mateo (n=3)	-	100.00	-	-	-	-
Santa Clara (n=1)	-	100.00	-	-	-	-
Solano (n=1)	100.00	-	-	-	-	-
Sonoma (n=1)	-	-	-	-	-	100.00
Yolo (n=0)	-	-	-	-	-	-
TOTAL (N=26)	46.15	34.62	7.96	-	7.96	3.85

Q64. How do you usually dispose of the rags or paper towels?

REGION:	At the marina collection	In the trash or garbage dump	Put it in recycling bins	Save it for later	Take it to a household hazardous waste collection center	Other
SF Bay (n=6)	-	16.67	50.00	16.67	16.67	-
SF Delta (n=0)	-	-	-	-	-	-
Southern CA (n=12)	-	41.67	33.33	-	16.67	8.33
Los Angeles (n=1)	-	100.00	-	-	-	-
COUNTY:						
Alameda (n=2)	-	-	-	50.00	50.00	-
Contra Costa (n=0)	-	-	-	-	-	-
Los Angeles (n=1)	-	100.00	-	-	-	-
Marin (n=1)	-	-	100.00	-	-	-
Napa (n=0)	-	-	-	-	-	-
Orange (n=1)	-	-	100.00	-	-	-
Sacramento (n=0)	-	-	-	-	-	-
San Diego (n=11)	-	45.45	27.27	-	18.18	9.09
San Francisco (n=0)	-	-	-	-	-	-
San Joaquin (n=0)	-	-	-	-	-	-
San Mateo (n=0)	-	-	-	-	-	-
Santa Clara (n=1)	-	100.00	-	-	-	-
Solano (n=0)	-	-	-	-	-	-
Sonoma (n=2)	-	-	100.00	-	-	-
Yolo (n=0)	-	-	-	-	-	-
TOTAL (N=19)	-	36.84	36.84	5.26	15.79	5.26

Q66. Do you think that using rags or paper towels to clean oil from the water poses no risk, only a slight risk, a moderate risk or a great risk to the environment?

REGION:	No risk	Only a slight risk	A moderate risk	A great risk	Don't know	Refused
SF Bay (n=6)	33.33	16.67	33.33	-	-	16.67
SF Delta (n=0)	-	-	-	-	-	-
Southern CA (n=12)	8.33	33.33	25.00	16.67	16.67	-
Los Angeles (n=1)	-	-	-	100.00	-	-
COUNTY:						
Alameda (n=2)	-	-	50.00	-	-	50.00
Contra Costa (n=0)	-	-	-	-	-	-
Los Angeles (n=1)	-	-	-	100.00	-	-
Marin (n=1)	100.00	-	-	-	-	-
Napa (n=0)	-	-	-	-	-	-
Orange (n=1)	-	100.00	-	-	-	-
Sacramento (n=0)	-	-	-	-	-	-
San Diego (n=11)	9.09	27.27	27.27	18.18	18.18	-
San Francisco (n=0)	-	-	-	-	-	-
San Joaquin (n=0)	-	-	-	-	-	-
San Mateo (n=0)	-	-	-	-	-	-
Santa Clara (n=1)	-	-	100.00	-	-	-
Solano (n=0)	-	-	-	-	-	-
Sonoma (n=2)	50.00	50.00	-	-	-	-
Yolo (n=0)	-	-	-	-	-	-
TOTAL (N=19)	15.79	26.32	26.32	15.79	10.53	5.26

Q67. Do you think that using soaps or detergents to clean oil from the water poses no risk, only a slight risk, a moderate risk, or a great risk to the environment?

REGION:	No risk	Only a slight risk	A moderate risk	A great risk	Don't know
SF Bay (n=4)	-	50.00	50.00	-	-
SF Delta (n=3)	-	-	100.00	-	-
Southern CA (n=5)	60.00	-	40.00	-	-
Los Angeles (n=9)	11.11	33.33	33.33	-	22.22
COUNTY:					
Alameda (n=1)	-	100.00	-	-	-
Contra Costa (n=0)	-	-	-	-	-
Los Angeles (n=9)	11.11	33.33	33.33	-	22.22
Marin (n=0)	-	-	-	-	-
Napa (n=1)	-	-	100.00	-	-
Orange (n=1)	100.00	-	-	-	-
Sacramento (n=1)	-	-	100.00	-	-
San Diego (n=4)	50.00	-	50.00	-	-
San Francisco (n=0)	-	-	-	-	-
San Joaquin (n=1)	-	-	100.00	-	-
San Mateo (n=1)	-	-	100.00	-	-
Santa Clara (n=1)	-	100.00	-	-	-
Solano (n=0)	-	-	-	-	-
Sonoma (n=0)	-	-	-	-	-
Yolo (n=1)	-	-	100.00	-	-
TOTAL (N=21)	19.05	23.81	47.62	-	9.52

Q68. Next I'm going to read a list of factors that might influence people to clean spilled oil in environmentally sound ways. As I read each one, please tell me whether it would be very significant, significant, somewhat significant or not significant at all in impacting your decision to use oil-absorbent pads or a bilge pump-out facility.

Q69. You knew oil is a hazardous waste.

REGION:	Very significant	Significant	Somewhat significant	Not at all significant	Don't know	Refused
SF Bay (n=162)	67.28	19.75	4.32	4.94	2.47	1.23
SF Delta (n=191)	64.40	25.65	3.14	3.66	1.05	2.09
Southern CA (n=200)	60.00	28.00	3.00	2.00	4.00	3.00
Los Angeles (n=154)	62.99	23.38	3.25	2.60	5.84	1.95
COUNTY:						
Alameda (n=63)	77.78	14.29	1.59	3.17	1.59	1.59
Contra Costa (n=60)	70.00	23.33	1.67	1.67	1.67	1.67
Los Angeles (n=154)	62.99	23.38	3.25	2.60	5.84	1.95
Marin (n=20)	60.00	25.00	-	15.00	-	-
Napa (n=9)	66.67	22.22	-	11.11	-	-
Orange (n=105)	59.05	31.43	2.86	2.86	3.81	-
Sacramento (n=76)	67.11	21.05	2.63	3.95	1.32	3.95
San Diego (n=95)	61.05	24.21	3.16	1.05	4.21	6.32
San Francisco (n=8)	62.50	12.50	12.50	12.50	-	-
San Joaquin (n=27)	55.56	33.33	7.41	3.70	-	-

Boating Clean and Green Survey, 1998

San Mateo (n=10)	70.00	-	30.00	-	-	-
Santa Clara (n=25)	64.00	20.00	8.00	-	8.00	-
Solano (n=17)	52.94	35.29	5.88	5.88	-	-
Sonoma (n=27)	51.85	37.04	-	3.70	3.70	3.70
Yolo (n=11)	54.55	36.36	-	9.09	-	-
TOTAL (N=707)	63.51	24.47	3.39	3.25	3.25	2.12

Q70. You found an easily accessible bilge pump-out facility.

REGION:	Very significant	Significant	Somewhat significant	Not at all significant	Don't know	Refused
SF Bay (n=162)	46.30	18.52	10.49	19.14	4.32	1.23
SF Delta (n=191)	37.70	24.08	7.33	21.99	7.33	1.57
Southern CA (n=200)	40.00	22.50	10.00	13.50	11.00	3.00
Los Angeles (n=154)	42.86	24.68	7.79	10.39	12.34	1.95
COUNTY:						
Alameda (n=63)	55.56	19.05	4.76	15.87	3.17	1.59
Contra Costa (n=60)	41.67	25.00	16.67	13.33	3.33	-
Los Angeles (n=154)	42.86	24.68	7.79	10.39	12.34	1.95
Marin (n=20)	30.00	10.00	15.00	35.00	10.00	-
Napa (n=9)	88.89	-	-	11.11	-	-
Orange (n=105)	38.10	25.71	11.43	11.43	13.33	-
Sacramento (n=76)	30.26	18.42	-	34.21	13.16	3.95
San Diego (n=95)	42.11	18.95	8.42	15.79	8.42	6.32
San Francisco (n=8)	37.50	12.50	12.50	37.50	-	-
San Joaquin (n=27)	37.04	33.33	7.41	22.22	-	-
San Mateo (n=10)	40.00	10.00	50.00	-	-	-
Santa Clara (n=25)	32.00	36.00	4.00	20.00	8.00	-
Solano (n=17)	35.29	29.41	11.76	11.76	11.76	-
Sonoma (n=27)	40.74	18.52	14.81	18.52	3.70	3.70
Yolo (n=11)	72.73	27.27	-	-	-	-
TOTAL (N=707)	41.44	22.49	8.91	16.41	8.77	1.98

Q71. You could get free or inexpensive oil-absorbent pads.

REGION:	Very significant	Significant	Somewhat significant	Not at all significant	Don't know	Refused
SF Bay (n=162)	59.88	20.37	5.56	9.88	3.09	1.23
SF Delta (n=191)	52.36	23.56	5.24	12.57	3.66	2.62
Southern CA (n=200)	46.50	26.50	5.00	12.00	7.00	3.00
Los Angeles (n=154)	52.60	20.78	7.14	11.04	6.49	1.95
COUNTY:						
Alameda (n=63)	66.67	17.46	3.17	7.94	3.17	1.59
Contra Costa (n=60)	63.33	21.67	3.33	10.00	1.67	-
Los Angeles (n=154)	52.60	20.78	7.14	11.04	6.49	1.95
Marin (n=20)	55.00	20.00	5.00	15.00	5.00	-
Napa (n=9)	77.78	11.11	-	11.11	-	-
Orange (n=105)	44.76	31.43	5.71	8.57	9.52	-
Sacramento (n=76)	44.74	19.74	6.58	17.11	5.26	6.58
San Diego (n=95)	48.42	21.05	4.21	15.79	4.21	6.32
San Francisco (n=8)	37.50	37.50	-	25.00	-	-
San Joaquin (n=27)	44.44	40.74	3.70	11.11	-	-
San Mateo (n=10)	80.00	10.00	10.00	-	-	-
Santa Clara (n=25)	48.00	24.00	12.00	12.00	4.00	-
Solano (n=17)	52.94	11.76	11.76	11.76	11.76	-
Sonoma (n=27)	51.85	25.93	7.41	7.41	3.70	3.70
Yolo (n=11)	63.64	36.36	-	-	-	-
TOTAL (N=707)	52.48	23.06	5.66	11.46	5.09	2.26

Q72. You thought it would be better for the environment?

REGION:	Very significant	Significant	Somewhat significant	Not at all significant	Don't know	Refused
SF Bay (n=162)	65.43	22.22	4.94	3.70	2.47	1.23
SF Delta (n=191)	59.16	26.70	5.24	3.14	4.19	1.57
Southern CA (n=200)	60.00	27.00	4.50	1.00	4.50	3.00
Los Angeles (n=154)	61.69	24.03	3.25	1.95	7.79	1.30
COUNTY:						
Alameda (n=63)	69.84	19.05	1.59	6.35	1.59	1.59
Contra Costa (n=60)	73.33	20.00	1.67	1.67	3.33	-
Los Angeles (n=154)	61.69	24.03	3.25	1.95	7.79	1.30
Marin (n=20)	60.00	20.00	15.00	5.00	-	-
Napa (n=9)	100.00	-	-	-	-	-
Orange (n=105)	62.86	27.62	5.71	-	3.81	-
Sacramento (n=76)	56.58	27.63	5.26	2.63	3.95	3.95
San Diego (n=95)	56.84	26.32	3.16	2.11	5.26	6.32
San Francisco (n=8)	75.00	25.00	-	-	-	-
San Joaquin (n=27)	44.44	33.33	11.11	7.41	3.70	-
San Mateo (n=10)	50.00	50.00	-	-	-	-
Santa Clara (n=25)	64.00	20.00	8.00	-	8.00	-
Solano (n=17)	47.06	29.41	5.88	5.88	11.76	-
Sonoma (n=27)	51.85	29.63	7.41	3.70	3.70	3.70
Yolo (n=11)	54.55	36.36	9.09	-	-	-
TOTAL (N=707)	61.39	25.18	4.53	2.40	4.67	1.84

Q73. You thought it would increase the number of fish or wildlife where you boat.

REGION:	Very significant	Significant	Somewhat significant	Not at all significant	Don't know	Refused
SF Bay (n=162)	65.43	17.28	5.56	7.41	2.47	1.85
SF Delta (n=191)	61.78	20.42	4.71	6.28	5.24	1.57
Southern CA (n=200)	59.00	21.00	5.50	7.00	4.50	3.00
Los Angeles (n=154)	59.74	21.43	5.19	6.49	5.19	1.95
COUNTY:						
Alameda (n=63)	76.19	12.70	-	4.76	3.17	3.17
Contra Costa (n=60)	70.00	18.33	5.00	6.67	-	-
Los Angeles (n=154)	59.74	21.43	5.19	6.49	5.19	1.95
Marin (n=20)	60.00	10.00	15.00	15.00	-	-
Napa (n=9)	55.56	22.22	-	22.22	-	-
Orange (n=105)	63.81	22.86	3.81	3.81	5.71	-
Sacramento (n=76)	64.47	14.47	3.95	3.95	9.21	3.95
San Diego (n=95)	53.68	18.95	7.37	10.53	3.16	6.32
San Francisco (n=8)	62.50	12.50	-	25.00	-	-
San Joaquin (n=27)	55.56	22.93	7.41	11.11	-	-
San Mateo (n=10)	60.00	40.00	-	-	-	-
Santa Clara (n=25)	60.00	24.00	12.00	-	4.00	-
Solano (n=17)	35.29	35.29	-	11.76	17.65	-
Sonoma (n=27)	55.56	18.52	11.11	7.41	3.70	3.70
Yolo (n=11)	54.55	36.36	9.09	-	-	-
TOTAL (N=707)	61.39	20.28	5.23	6.79	4.38	2.12

Q74. You knew it was illegal to use detergents or soaps to clean oil spills.

REGION:	Very significant	Significant	Somewhat significant	Not at all significant	Don't know	Refused
SF Bay (n=162)	52.47	21.60	8.02	11.11	5.56	1.23
SF Delta (n=191)	39.27	33.51	5.76	12.04	7.33	2.09
Southern CA (n=200)	41.50	31.50	3.00	11.50	9.50	3.00
Los Angeles (n=154)	46.10	25.97	7.79	6.49	11.69	1.95
COUNTY:						
Alameda (n=63)	58.73	17.46	3.17	12.70	6.35	1.59
Contra Costa (n=60)	43.33	38.33	5.00	8.33	5.00	-
Los Angeles (n=154)	46.10	25.97	7.79	6.49	11.69	1.95
Marin (n=20)	50.00	30.00	5.00	15.00	-	-
Napa (n=9)	77.78	-	-	22.22	-	-
Orange (n=105)	46.67	37.14	1.90	6.67	7.62	-
Sacramento (n=76)	35.53	27.63	6.58	15.79	9.21	5.26
San Diego (n=95)	35.79	25.26	4.21	16.84	11.58	6.32
San Francisco (n=8)	50.00	25.00	12.50	12.50	-	-
San Joaquin (n=27)	37.04	37.04	11.11	11.11	3.70	-
San Mateo (n=10)	40.00	20.00	30.00	10.00	-	-
Santa Clara (n=25)	52.00	24.00	8.00	4.00	12.00	-
Solano (n=17)	41.18	29.41	-	17.65	11.76	-
Sonoma (n=27)	37.04	29.63	14.81	7.41	7.41	3.70
Yolo (n=11)	45.45	45.45	-	-	9.09	-
TOTAL (N=707)	44.41	28.57	5.94	10.47	8.49	2.12

Q75. You knew it was illegal to discharge oil directly into waterways.

REGION:	Very significant	Significant	Somewhat significant	Not at all significant	Don't know	Refused
SF Bay (n=162)	71.60	14.81	3.70	6.79	1.85	1.23
SF Delta (n=191)	68.06	23.56	1.57	3.14	1.57	2.09
Southern CA (n=200)	63.50	23.50	2.50	3.50	4.00	3.00
Los Angeles (n=154)	68.18	18.83	1.95	1.95	7.14	1.95
COUNTY:						
Alameda (n=63)	80.95	9.52	1.59	4.76	1.59	1.59
Contra Costa (n=60)	76.67	21.67	-	1.67	-	-
Los Angeles (n=154)	68.18	18.83	1.95	1.95	7.14	1.95
Marin (n=20)	65.00	20.00	-	15.00	-	-
Napa (n=9)	77.78	11.11	-	11.11	-	-
Orange (n=105)	62.86	28.57	-	4.76	3.81	-
Sacramento (n=76)	69.74	17.11	2.63	2.63	2.63	5.26
San Diego (n=95)	64.21	17.89	5.26	2.11	4.21	6.32
San Francisco (n=8)	75.00	25.00	-	-	-	-
San Joaquin (n=27)	48.15	40.74	3.70	7.41	-	-
San Mateo (n=10)	30.00	30.00	30.00	10.00	-	-
Santa Clara (n=25)	76.00	12.00	8.00	-	4.00	-
Solano (n=17)	58.82	29.41	-	5.88	5.88	-
Sonoma (n=27)	62.96	18.52	-	11.11	3.70	3.70
Yolo (n=11)	72.73	27.27	-	-	-	-
TOTAL (N=707)	67.61	20.51	2.40	3.82	3.54	2.12

Q76. Do you know of any laws limiting the use of detergents on oil spills or sheens?

REGION:	Yes	No	Refused
SF Bay (n=230)	15.22	84.78	-
SF Delta (n=271)	14.39	83.39	2.21
Southern CA (n=269)	13.38	86.62	-
Los Angeles (n=231)	17.75	82.25	-
COUNTY:			
Alameda (n=75)	16.00	84.00	-
Contra Costa (n=86)	9.30	90.70	-
Los Angeles (n=231)	17.75	82.25	-
Marin (n=32)	9.38	90.62	-
Napa (n=14)	7.14	92.86	-
Orange (n=131)	8.40	91.60	-
Sacramento (n=106)	19.81	74.53	5.66
San Diego (n=138)	18.12	81.88	-
San Francisco (n=15)	-	100.00	-
San Joaquin (n=38)	7.89	92.11	-
San Mateo (n=11)	27.27	72.73	-
Santa Clara (n=37)	24.32	75.68	-
Solano (n=25)	24.00	76.00	-
Sonoma (n=46)	15.22	84.78	-
Yolo (n=16)	6.25	93.75	-
TOTAL (N=1001)	15.08	84.32	0.60

Q77. Next I'm going to read a short list of factors that may or may not contribute to oil leaks or spills from boats. For each item I mention please tell me whether you think it contributes to oil leaks or spills that you might have.

Q78. Automatic bilge pump discharges oil into the water.

REGION:	Yes, it contributes to oil leaks	No, it does not contribute to oil leaks
SF Bay (n=98)	36.73	63.27
SF Delta (n=99)	39.39	60.61
Southern CA (n=100)	42.00	58.00
Los Angeles (n=98)	37.76	62.24
COUNTY:		
Alameda (n=38)	26.32	73.68
Contra Costa (n=40)	45.00	55.00
Los Angeles (n=98)	37.76	62.24
Marin (n=14)	21.43	78.57
Napa (n=6)	66.67	33.33
Orange (n=51)	50.98	49.02
Sacramento (n=28)	32.14	67.86
San Diego (n=49)	32.65	67.35
San Francisco (n=7)	42.86	57.14
San Joaquin (n=16)	43.75	56.25
San Mateo (n=6)	50.00	50.00
Santa Clara (n=14)	50.00	50.00

Solano (n=8)	25.00	75.00
Sonoma (n=13)	46.15	53.85
Yolo (n=7)	42.86	57.14
TOTAL (N=395)	38.99	61.01

Q79. There is not enough room under the crank case for a container to hold the oil during oil changes.

REGION:	Yes, it contributes to oil leaks	No, it does not contribute to oil leaks
SF Bay (n=162)	26.54	73.46
SF Delta (n=191)	22.51	77.49
Southern CA (n=200)	28.00	72.00
Los Angeles (n=154)	30.52	69.48
COUNTY:		
Alameda (n=63)	22.22	77.78
Contra Costa (n=60)	21.67	78.33
Los Angeles (n=154)	30.52	69.48
Marin (n=20)	45.00	55.00
Napa (n=9)	22.22	77.78
Orange (n=105)	27.62	72.38
Sacramento (n=76)	25.00	75.00
San Diego (n=95)	28.42	71.58
San Francisco (n=8)	12.50	87.50
San Joaquin (n=27)	25.93	74.07
San Mateo (n=10)	40.00	60.00
Santa Clara (n=25)	20.00	80.00
Solano (n=17)	17.65	82.35
Sonoma (n=27)	29.63	70.37

Yolo (n=11)	9.09	90.91
TOTAL (N=707)	26.73	73.27

Q80. Oil spills out of containers when I transfer it to and from my boat.

REGION:	Yes, it contributes to oil leaks	No, it does not contribute to oil leaks
SF Bay (n=162)	21.60	78.40
SF Delta (n=191)	15.18	84.82
Southern CA (n=200)	27.50	72.50
Los Angeles (n=154)	20.78	79.22
COUNTY:		
Alameda (n=63)	23.81	76.19
Contra Costa (n=60)	15.00	85.00
Los Angeles (n=154)	20.78	79.22
Marin (n=20)	25.00	75.00
Napa (n=9)	22.22	77.78
Orange (n=105)	32.38	67.62
Sacramento (n=76)	14.47	85.53
San Diego (n=95)	22.11	77.89
San Francisco (n=8)	-	100.00
San Joaquin (n=27)	14.81	85.19
San Mateo (n=10)	30.00	70.00
Santa Clara (n=25)	8.00	92.00
Solano (n=17)	17.65	82.35

Sonoma (n=27)	29.63	70.37
Yolo (n=11)	18.18	81.82
TOTAL (N=707)	21.36	78.64

Q81. I have leaks in engine lines, hoses or fittings.

REGION:	Yes, it contributes to oil leaks	No, it does not contribute to oil leaks
SF Bay (n=162)	29.01	70.99
SF Delta (n=191)	30.89	69.11
Southern CA (n=200)	30.50	69.50
Los Angeles (n=154)	34.42	65.58
COUNTY:		
Alameda (n=63)	25.40	74.60
Contra Costa (n=60)	30.00	70.00
Los Angeles (n=154)	34.42	65.58
Marin (n=20)	40.00	60.00
Napa (n=9)	44.44	55.56
Orange (n=105)	25.71	74.29
Sacramento (n=76)	31.58	68.42
San Diego (n=95)	35.79	64.21
San Francisco (n=8)	-	100.00
San Joaquin (n=27)	29.63	70.37
San Mateo (n=10)	40.00	60.00
Santa Clara (n=25)	28.00	72.00

Solano (n=17)	29.41	70.59
Sonoma (n=27)	29.63	70.37
Yolo (n=11)	36.36	63.64
TOTAL (N=707)	31.12	68.88

Q82. Is there something else that I didn't mention?

REGION:	Yes	No
SF Bay (n=162)	11.11	88.89
SF Delta (n=191)	9.42	90.58
Southern CA (n=200)	7.00	93.00
Los Angeles (n=154)	12.99	87.01
COUNTY:		
Alameda (n=63)	7.94	92.06
Contra Costa (n=60)	6.67	93.33
Los Angeles (n=154)	12.99	87.01
Marin (n=20)	15.00	85.00
Napa (n=9)	33.33	66.67
Orange (n=105)	5.71	94.29
Sacramento (n=76)	7.89	92.11
San Diego (n=95)	8.42	91.58
San Francisco (n=8)	-	100.00
San Joaquin (n=27)	14.81	85.19
San Mateo (n=10)	20.00	80.00
Santa Clara	8.00	92.00

(n=25)		
Solano (n=17)	11.76	88.24
Sonoma (n=27)	11.11	88.89
Yolo (n=11)	18.18	81.82
TOTAL (N=707)	9.90	90.10

Q84. Now I would like to know what types of services you would use if they were offered at your local marina or fuel dock. As I read each service, please tell me if you would use it if it was free of charge.

Q85. Bilge pump-out stations at fueling or sewage pump-out locations.

REGION:	Yes, I would use them	No, I would not use them.
SF Bay (n=162)	59.88	40.12
SF Delta (n=191)	67.02	32.98
Southern CA (n=200)	69.50	30.50
Los Angeles (n=154)	66.88	33.12
COUNTY:		
Alameda (n=63)	58.73	41.27
Contra Costa (n=60)	78.33	21.67
Los Angeles (n=154)	66.88	33.12
Marin (n=20)	45.00	55.00
Napa (n=9)	77.78	22.22
Orange (n=105)	64.76	35.24
Sacramento (n=76)	56.58	43.42
San Diego (n=95)	74.74	25.26
San Francisco (n=8)	50.00	50.00

San Joaquin (n=27)	66.67	33.33
San Mateo (n=10)	80.00	20.00
Santa Clara (n=25)	60.00	40.00
Solano (n=17)	52.94	47.06
Sonoma (n=27)	62.96	37.04
Yolo (n=11)	100.00	-
TOTAL (N=707)	66.05	33.95

Q86. Mobile bilge pump-out services.

REGION:	Yes, I would use them	No, I would not use them
SF Bay (n=162)	53.09	46.91
SF Delta (n=191)	58.12	41.88
Southern CA (n=200)	56.50	43.50
Los Angeles (n=154)	55.19	44.81
COUNTY:		
Alameda (n=63)	57.14	42.86
Contra Costa (n=60)	70.00	30.00
Los Angeles (n=154)	55.19	44.81
Marin (n=20)	50.00	50.00
Napa (n=9)	66.67	33.33
Orange (n=105)	50.48	49.52
Sacramento (n=76)	47.37	52.63
San Diego (n=95)	63.16	36.84
San Francisco (n=8)	25.00	75.00
San Joaquin (n=27)	55.56	44.44
San Mateo (n=10)	70.00	30.00

)		
Santa Clara (n=25)	44.00	56.00
Solano (n=17)	52.94	47.06
Sonoma (n=27)	51.85	48.15
Yolo (n=11)	81.82	18.18
TOTAL (N=707)	55.87	44.13

Q87. Distribution of oil absorbent pads.

REGION:	Yes, I would use them	No, I would not use them
SF Bay (n=162)	85.19	14.81
SF Delta (n=191)	80.10	19.90
Southern CA (n=200)	82.50	17.50
Los Angeles (n=154)	82.47	17.53
COUNTY:		
Alameda (n=63)	87.30	12.70
Contra Costa (n=60)	83.33	16.67
Los Angeles (n=154)	82.47	17.53
Marin (n=20)	70.00	30.00
Napa (n=9)	88.89	11.11
Orange (n=105)	82.86	17.14
Sacramento (n=76)	77.63	22.37
San Diego (n=95)	82.11	17.89
San Francisco (n=8)	75.00	25.00
San Joaquin	81.48	18.52

(n=27)		
San Mateo (n=10)	100.00	-
Santa Clara (n=25)	92.00	8.00
Solano (n=17)	70.59	29.41
Sonoma (n=27)	81.48	18.52
Yolo (n=11)	90.91	9.09
TOTAL (N=707)	82.46	17.54

Q88. Loans of small oil change pumps.

REGION:	Yes, I would use them	No, I would not use them
SF Bay (n=162)	50.00	50.00
SF Delta (n=191)	53.40	46.60
Southern CA (n=200)	55.00	45.00
Los Angeles (n=154)	51.95	48.05
COUNTY:		
Alameda (n=63)	49.21	50.97
Contra Costa (n=60)	53.33	46.67
Los Angeles (n=154)	51.95	48.05
Marin (n=20)	35.00	65.00
Napa (n=9)	66.67	33.33
Orange (n=105)	54.29	45.71
Sacramento (n=76)	48.68	51.32
San Diego (n=95)	55.79	44.21

San Francisco (n=8)	-	100.00
San Joaquin (n=27)	62.96	37.04
San Mateo (n=10)	80.00	20.00
Santa Clara (n=25)	60.00	40.00
Solano (n=17)	52.94	47.06
Sonoma (n=27)	51.85	41.27
Yolo (n=11)	63.64	36.36
TOTAL (N=707)	52.76	47.24

Q89. Loans of oil collection containers.

REGION:	Yes, I would use them	No, I would not use them
SF Bay (n=162)	59.26	40.74
SF Delta (n=191)	61.26	38.74
Southern CA (n=200)	67.50	32.50
Los Angeles (n=154)	68.18	31.82
COUNTY:		
Alameda (n=63)	58.73	41.27
Contra Costa (n=60)	61.67	38.33
Los Angeles (n=154)	68.18	31.82
Marin (n=20)	55.00	45.00
Napa (n=9)	66.67	33.33
Orange (n=105)	69.52	30.48
Sacramento (n=76)	57.89	42.11
San Diego (n=95)	65.26	34.74

San Francisco (n=8)	12.50	87.50
San Joaquin (n=27)	66.67	33.33
San Mateo (n=10)	100.00	-
Santa Clara (n=25)	56.00	44.00
Solano (n=17)	64.71	35.29
Sonoma (n=27)	62.96	37.04
Yolo (n=11)	63.64	36.36
TOTAL (N=707)	64.07	35.93

Q90. Oil change services.

REGION:	Yes, I would use them	No, I would not use them
SF Bay (n=162)	58.64	41.36
SF Delta (n=191)	58.64	41.36
Southern CA (n=200)	64.00	36.00
Los Angeles (n=154)	65.58	34.42
COUNTY:		
Alameda (n=63)	61.90	38.10
Contra Costa (n=60)	63.33	36.67
Los Angeles (n=154)	65.58	34.42
Marin (n=20)	70.00	30.00
Napa (n=9)	66.67	33.33
Orange (n=105)	64.76	35.24
Sacramento (n=76)	55.26	44.74

San Diego (n=95)	63.16	36.84
San Francisco (n=8)	37.50	62.50
San Joaquin (n=27)	62.96	37.04
San Mateo (n=10)	40.00	60.00
Santa Clara (n=25)	52.00	48.00
Solano (n=17)	41.18	58.82
Sonoma (n=27)	59.26	40.74
Yolo (n=11)	72.73	27.27
TOTAL (N=707)	61.67	38.33

Q91. Would you be willing to pay a fee for bilge pump-out stations at fueling or sewage pump-out locations?

REGION:	Yes	No
SF Bay (n=162)	67.01	32.99
SF Delta (n=191)	67.97	32.03
Southern CA (n=200)	58.99	41.01
Los Angeles (n=154)	62.14	37.86
COUNTY:		
Alameda (n=37)	81.08	18.92
Contra Costa (n=47)	57.45	42.55
Los Angeles (n=103)	62.14	37.86
Marin (n=9)	44.44	55.56
Napa (n=7)	71.43	28.57
Orange (n=68)	69.12	30.88
Sacramento (n=43)	74.42	25.58

San Diego (n=71)	49.30	50.70
San Francisco (n=4)	50.00	50.00
San Joaquin (n=18)	77.78	22.22
San Mateo (n=8)	50.00	50.00
Santa Clara (n=15)	66.67	33.33
Solano (n=9)	77.78	22.22
Sonoma (n=17)	58.82	41.18
Yolo (n=11)	63.64	36.36
TOTAL (N=467)	63.81	36.19

Q92. How much would you be willing to pay for that service?

REGION:	Less than \$5	\$5-\$10	\$10-\$15	More than \$15	Refused
SF Bay (n=65)	46.15	38.46	6.15	6.15	3.08
SF Delta (n=87)	43.68	34.48	6.90	3.45	11.49
Southern CA (n=82)	36.59	35.57	9.76	6.10	12.20
Los Angeles (n=64)	34.38	43.75	12.50	3.12	6.25
COUNTY:					
Alameda (n=30)	43.33	40.00	10.00	6.67	-
Contra Costa (n=27)	40.74	29.63	7.41	3.70	18.52
Los Angeles (n=64)	34.38	43.75	12.50	3.12	6.25
Marin (n=4)	25.00	25.00	25.00	25.00	-
Napa (n=5)	80.00	20.00	-	-	-
Orange (n=47)	31.91	36.17	10.64	8.51	12.77
Sacramento (n=32)	46.88	37.50	3.12	3.12	9.38

Boating Clean and Green Survey, 1998

San Diego (n=35)	42.86	34.29	8.57	2.86	11.43
San Francisco (n=2)	-	100.00	-	-	-
San Joaquin (n=14)	28.57	50.00	14.29	-	7.14
San Mateo (n=4)	25.00	50.00	-	-	25.00
Santa Clara (n=10)	50.00	30.00	-	10.00	10.00
Solano (n=7)	42.86	28.57	-	14.29	14.29
Sonoma (n=10)	60.00	40.00	-	-	-
Yolo (n=7)	71.43	14.29	14.29	-	-
TOTAL (N=298)	40.27	37.58	8.72	4.70	8.72

Q93. Would you be willing to pay a fee for mobile bilge pump-out services?

REGION:	Yes	No
SF Bay (n=86)	62.79	37.21
SF Delta (n=111)	54.05	45.95
Southern CA (n=113)	57.52	42.48
Los Angeles (n=85)	55.29	44.71
COUNTY:		
Alameda (n=36)	61.11	38.89
Contra Costa (n=42)	47.62	52.38
Los Angeles (n=85)	55.29	44.71
Marin (n=10)	60.00	40.00
Napa (n=8)	66.67	33.33
Orange (n=53)	64.15	35.85
Sacramento (n=36)	52.78	47.22

San Diego (n=60)	51.67	48.33
San Francisco (n=2)	50.00	50.00
San Joaquin (n=15)	66.67	33.33
San Mateo (n=7)	57.14	42.86
Santa Clara (n=11)	54.55	45.45
Solano (n=9)	44.44	55.56
Sonoma (n=14)	78.57	21.43
Yolo (n=9)	77.78	22.22
TOTAL (N=395)	57.22	42.78

Q94. How much would you be willing to pay for that service?

REGION:	Less than \$5	\$5-\$10	\$10-\$15	More than \$15	Refused
SF Bay (n=54)	20.37	53.70	11.11	11.11	3.70
SF Delta (n=60)	21.67	46.67	20.00	1.67	10.00
Southern CA (n=65)	20.00	49.23	10.77	13.85	6.15
Los Angeles (n=47)	27.66	25.53	23.40	17.02	6.38
COUNTY:					
Alameda (n=22)	4.55	72.73	9.09	9.09	4.55
Contra Costa (n=20)	15.00	35.00	20.00	-	30.00
Los Angeles (n=47)	27.66	25.53	23.40	17.02	6.38
Marin (n=6)	16.67	33.33	33.33	16.67	-
Napa (n=4)	25.00	50.00	25.00		-
Orange (n=34)	23.53	52.94	5.88	11.76	5.88
Sacramento (n=19)	15.79	63.16	15.79	5.26	-

Boating Clean and Green Survey, 1998

San Diego (n=31)	16.13	45.16	16.13	16.13	6.45
San Francisco (n=1)	-	-	-	100.00	-
San Joaquin (n=10)	30.00	40.00	30.00	-	-
San Mateo (n=4)	25.00	50.00	25.00	-	-
Santa Clara (n=6)	33.33	16.67	-	33.33	16.67
Solano (n=4)	50.00	50.00	-	-	-
Sonoma (n=11)	45.45	54.55	-	-	-
Yolo (n=7)	28.57	42.86	28.57	-	-
TOTAL (N=226)	22.12	44.69	15.93	10.62	6.64

Q95. Would you be willing to pay a fee for the distribution of oil absorbent pads?

REGION:	Yes	No
SF Bay (n=138)	67.39	32.61
SF Delta (n=153)	67.32	32.68
Southern CA (n=165)	63.64	36.36
Los Angeles (n=127)	68.50	31.50
COUNTY:		
Alameda (n=55)	63.64	36.36
Contra Costa (n=50)	74.00	26.00
Los Angeles (n=127)	68.50	31.50
Marin (n=14)	64.29	35.71
Napa (n=8)	62.50	37.50
Orange (n=87)	68.97	31.03
Sacramento (n=59)	66.10	33.90

San Diego (n=78)	57.69	42.31
San Francisco (n=6)	83.33	16.67
San Joaquin (n=22)	63.64	36.36
San Mateo (n=10)	90.00	10.00
Santa Clara (n=23)	78.26	21.74
Solano (n=12)	50.00	50.00
Sonoma (n=22)	54.55	45.45
Yolo (n=10)	70.00	30.00
TOTAL (N=583)	66.55	33.45

Q96. How much would you be willing to pay for that service?

REGION:	Less than \$5	\$5-\$10	\$10-\$15	More than \$15	Refused
SF Bay (n=93)	64.52	24.73	3.23	2.15	5.38
SF Delta (n=103)	56.31	29.13	1.94	3.88	8.74
Southern CA (n=105)	57.14	23.81	2.86	2.86	13.33
Los Angeles (n=87)	63.22	19.54	9.20	2.30	5.75
COUNTY:					
Alameda (n=35)	62.86	28.57	2.86	-	5.71
Contra Costa (n=37)	48.65	18.92	2.70	10.81	18.92
Los Angeles (n=87)	63.22	19.54	9.20	2.30	5.75
Marin (n=9)	66.67	22.22	11.11	-	-
Napa (n=5)	100.00	-	-	-	-
Orange (n=60)	66.67	20.00	-	1.67	11.67
Sacramento	56.41	38.46	-	-	5.13

Boating Clean and Green Survey, 1998

(n=39)					
San Diego (n=45)	44.44	28.89	6.67	4.44	15.56
San Francisco (n=5)	40.00	40.00	-	20.00	-
San Joaquin (n=14)	57.14	42.86	-	-	-
San Mateo (n=9)	33.33	44.44	-	-	22.22
Santa Clara (n=18)	72.22	22.22	-	5.56	-
Solano (n=6)	66.67	33.33	-	-	-
Sonoma (n=12)	75.00	8.33	8.33	-	8.33
Yolo (n=7)	85.71	-	14.29	-	-
TOTAL (N=388)	60.05	24.48	4.12	2.84	8.51

Q97. Would you be willing to pay a fee for loans of small oil change pumps?

REGION:	Yes	No
SF Bay (n=81)	59.26	40.74
SF Delta (n=102)	55.88	44.12
Southern CA (n=110)	61.82	38.18
Los Angeles (n=80)	47.50	52.50
COUNTY:		
Alameda (n=31)	48.39	51.61
Contra Costa (n=32)	40.62	59.38
Los Angeles (n=80)	47.50	52.50
Marin (n=7)	85.71	14.29
Napa (n=6)	66.67	33.33
Orange (n=57)	71.93	28.07
Sacramento	75.68	24.32

(n=37)		
San Diego (n=53)	50.94	49.06
San Francisco (n=0)	-	-
San Joaquin (n=17)	52.94	47.06
San Mateo (n=8)	87.50	12.50
Santa Clara (n=15)	46.67	53.33
Solano (n=9)	22.22	77.78
Sonoma (n=14)	64.29	35.71
Yolo (n=7)	71.43	28.57
TOTAL (N=373)	56.57	43.43

Q98. How much would you be willing to pay for that service?

REGION:	Less than \$5	\$5-\$10	\$10-\$15	More than \$15	Refused
SF Bay (n=48)	43.75	41.67	10.42	-	4.17
SF Delta (n=57)	47.37	42.11	1.75	-	8.77
Southern CA (n=68)	44.12	35.29	11.76	2.94	5.88
Los Angeles (n=38)	31.58	42.11	10.53	7.89	7.89
COUNTY:					
Alameda (n=15)	53.33	33.33	13.33	-	-
Contra Costa (n=13)	7.69	69.23	-	-	23.08
Los Angeles (n=38)	31.58	42.11	10.53	7.89	7.89
Marin (n=6)	33.33	33.33	33.33	-	-
Napa (n=4)	50.00	25.00	25.00	-	-
Orange (n=41)	51.22	29.27	12.20	2.44	4.88
Sacramento	67.86	25.00	3.57	-	3.57

Boating Clean and Green Survey, 1998

(n=28)					
San Diego (n=27)	33.33	44.44	11.11	3.70	7.41
San Francisco (n=0)	-	-	-	-	-
San Joaquin (n=9)	44.44	44.44	-	-	11.11
San Mateo (n=7)	14.29	71.43	-	-	14.29
Santa Clara (n=7)	42.86	57.14	-	-	-
Solano (n=2)	100.00	-	-	-	-
Sonoma (n=9)	55.56	33.33	-	-	11.11
Yolo (n=5)	20.00	80.00	-	-	-
TOTAL (N=211)	42.65	39.81	8.53	2.37	6.64

Q99. Would you be willing to pay a fee for loans of small oil collection containers?

REGION:	Yes	No
SF Bay (n=96)	39.58	60.42
SF Delta (n=117)	44.44	55.56
Southern CA (n=135)	40.74	59.26
Los Angeles (n=105)	40.00	60.00
COUNTY:		
Alameda (n=37)	29.73	70.27
Contra Costa (n=37)	48.65	51.35
Los Angeles (n=105)	40.00	60.00
Marin (n=11)	45.45	54.55
Napa (n=6)	50.00	50.00
Orange (n=73)	49.32	50.68

Sacramento (n=44)	43.18	56.82
San Diego (n=62)	30.65	69.35
San Francisco (n=1)	100.00	-
San Joaquin (n=18)	38.89	61.11
San Mateo (n=10)	60.00	40.00
Santa Clara (n=14)	35.71	64.29
Solano (n=11)	36.36	63.64
Sonoma (n=17)	41.18	58.82
Yolo (n=7)	57.14	42.86
TOTAL (N=453)	41.28	58.72

Q100. How much would you be willing to pay for that service?

REGION:	Less than \$5	\$5-\$10	\$10-\$15	More than \$15	Refused
SF Bay (n=38)	60.53	31.58	2.63	-	5.26
SF Delta (n=52)	71.15	23.08	1.92	-	3.85
Southern CA (n=55)	65.45	25.45	3.64	3.64	1.82
Los Angeles (n=42)	59.52	9.52	16.67	4.76	9.52
COUNTY:					
Alameda (n=11)	54.55	36.36	-	-	9.09
Contra Costa (n=18)	61.11	33.33	-	-	5.56
Los Angeles (n=42)	59.52	9.52	16.67	4.76	9.52
Marin (n=5)	40.00	40.00	20.00	-	-
Napa (n=3)	100.00	-	-	-	-

Boating Clean and Green Survey, 1998

Orange (n=36)	61.11	25.00	5.56	5.56	2.78
Sacramento (n=19)	68.42	26.32	5.26	-	-
San Diego (n=19)	73.68	26.32	-	-	-
San Francisco (n=1)	100.00	-	-	-	-
San Joaquin (n=7)	85.71	14.29	-	-	-
San Mateo (n=12)	66.67	83.33	-	-	16.67
Santa Clara (n=5)	60.00	40.00	-	-	-
Solano (n=4)	100.00	-	-	-	-
Sonoma (n=7)	71.43	28.57	-	-	-
Yolo (n=4)	75.00	-	-	-	25.00
TOTAL (N=187)	64.71	22.46	5.88	2.14	4.81

Q101. Would you be willing to pay a fee for oil change services?

REGION:	Yes	No
SF Bay (n=95)	77.89	22.11
SF Delta (n=112)	63.39	36.61
Southern CA (n=128)	75.00	25.00
Los Angeles (n=101)	65.35	34.65
COUNTY:		
Alameda (n=29)	74.36	25.64
Contra Costa (n=38)	60.53	39.47
Los Angeles (n=101)	65.35	34.65
Marin (n=14)	78.57	21.43

Napa (n=6)	83.33	16.67
Orange (n=68)	83.82	16.18
Sacramento (n=42)	73.81	26.19
San Diego (n=60)	65.00	35.00
San Francisco (n=3)	100.00	-
San Joaquin (n=17)	47.06	52.94
San Mateo (n=4)	100.00	-
Santa Clara (n=13)	76.92	23.08
Solano (n=7)	57.14	42.86
Sonoma (n=16)	75.00	25.00
Yolo (n=8)	62.50	37.50
TOTAL (N=436)	70.41	29.59

Q102. How much would you be willing to pay for that service?

REGION:	Less than \$5	\$5-\$10	\$10-\$15	More than \$15	Refused
SF Bay (n=74)	10.81	24.32	24.32	37.84	2.70
SF Delta (n=71)	12.68	22.54	29.58	23.94	11.27
Southern CA (n=96)	8.33	39.58	18.75	23.96	9.38
Los Angeles (n=66)	15.15	25.76	21.21	34.85	3.03
COUNTY:					
Alameda (n=29)	3.45	24.14	31.03	41.38	-
Contra Costa (n=23)	-	17.39	34.78	26.09	21.74
Los Angeles (n=66)	15.15	25.76	21.21	34.85	3.03
Marin (n=11)	9.09	27.27	27.27	36.36	-

Boating Clean and Green Survey, 1998

Napa (n=5)	40.00	20.00		20.00	20.00
Orange (n=57)	3.51	42.11	24.56	19.30	10.53
Sacramento (n=31)	16.13	29.03	22.58	22.58	9.68
San Diego (n=39)	15.38	35.90	10.26	30.77	7.69
San Francisco (n=3)	-	33.33	-	66.67	-
San Joaquin (n=8)	12.50	12.50	37.50	37.50	-
San Mateo (n=4)	25.00	-	25.00	25.00	25.00
Santa Clara (n=10)	-	30.00	40.00	30.00	-
Solano (n=4)	50.00	25.00	25.00	-	-
Sonoma (n=12)	25.00	25.00	8.33	41.67	-
Yolo (n=5)	20.00	20.00	40.00	20.00	-
TOTAL (N=307)	11.40	28.99	23.13	29.64	6.84

Q103. Do you ever refuel your boat in the water?

REGION:	Yes	No
SF Bay (n=230)	46.52	53.48
SF Delta (n=271)	50.18	49.82
Southern CA (n=269)	51.67	48.33
Los Angeles (n=231)	49.78	50.22
COUNTY:		
Alameda (n=75)	54.67	45.33
Contra Costa (n=86)	66.28	33.72
Los Angeles (n=231)	49.78	50.22

Marin (n=32)	46.88	53.12
Napa (n=14)	21.43	78.57
Orange (n=131)	56.49	43.51
Sacramento (n=106)	40.57	59.43
San Diego (n=138)	47.10	52.90
San Francisco (n=15)	53.33	46.67
San Joaquin (n=38)	44.74	55.26
San Mateo (n=11)	81.82	18.18
Santa Clara (n=37)	45.95	54.05
Solano (n=25)	48.00	52.00
Sonoma (n=46)	30.43	69.57
Yolo (n=16)	43.75	56.25
TOTAL (N=1001)	49.65	50.35

Q104. Do you usually fuel your own boat, or does a fuel dock operator do it for you?

REGION:	Fuel own boat	Fuel dock operator
SF Bay (n=107)	85.05	14.95
SF Delta (n=136)	76.47	23.53
Southern CA (n=139)	65.47	34.53
Los Angeles (n=115)	76.52	23.48
COUNTY:		
Alameda (n=41)	80.49	19.51
Contra Costa	77.19	22.81

(n=57)		
Los Angeles (n=115)	76.52	23.48
Marin (n=15)	86.67	13.33
Napa (n=3)	100.00	-
Orange (n=74)	63.51	36.49
Sacramento (n=43)	69.77	30.23
San Diego (n=65)	67.69	32.31
San Francisco (n=8)	87.50	12.50
San Joaquin (n=17)	70.59	29.41
San Mateo (n=9)	100.00	-
Santa Clara (n=17)	76.47	23.53
Solano (n=12)	91.67	8.33
Sonoma (n=14)	92.86	7.14
Yolo (n=7)	100.00	-
TOTAL (N=497)	75.25	24.75

Q105. When fueling your boat in the water do you use an absorbent pad or rag to wipe up the spills?

REGION:	Yes	No
SF Bay (n=91)	62.64	37.36
SF Delta (n=104)	72.12	27.88
Southern CA (n=91)	69.23	30.77
Los Angeles (n=88)	68.18	31.82
COUNTY:		
Alameda (n=33)	54.55	45.45
Contra Costa (n=44)	63.64	36.36

Los Angeles (n=88)	68.18	31.82
Marin (n=13)	69.23	30.77
Napa (n=3)	66.67	33.33
Orange (n=47)	65.96	34.04
Sacramento (n=30)	73.33	26.67
San Diego (n=44)	72.73	27.27
San Francisco (n=7)	85.71	14.29
San Joaquin (n=12)	91.67	8.33
San Mateo (n=9)	77.78	22.22
Santa Clara (n=13)	61.54	38.46
Solano (n=11)	72.73	27.27
Sonoma (n=13)	53.85	46.15
Yolo (n=7)	85.71	14.29
TOTAL (N=374)	68.18	31.82

Q106. Do you top off your fuel tank?

REGION:	Yes	No
SF Bay (n=91)	10.99	89.01
SF Delta (n=104)	21.15	78.85
Southern CA (n=91)	17.58	82.42
Los Angeles (n=88)	25.00	75.00
COUNTY:		
Alameda (n=33)	12.12	87.88
Contra Costa (n=44)	25.00	75.00

Los Angeles (n=88)	25.00	75.00
Marin (n=13)	23.08	76.92
Napa (n=3)	33.33	66.67
Orange (n=47)	10.64	89.36
Sacramento (n=30)	30.00	70.00
San Diego (n=44)	25.00	75.00
San Francisco (n=7)	14.29	85.71
San Joaquin (n=12)	8.33	91.67
San Mateo (n=9)	-	100.00
Santa Clara (n=13)	-	100.00
Solano (n=11)	9.09	90.91
Sonoma (n=13)	7.69	92.31
Yolo (n=7)	-	100.00
TOTAL (N=374)	18.72	81.28

Q107. Do you fuel slowly (in an effort to prevent spills from the air vent)?

REGION:	Yes	No
SF Bay (n=91)	87.91	12.09
SF Delta (n=104)	85.58	14.42
Southern CA (n=91)	89.01	10.99
Los Angeles (n=88)	98.86	1.14
COUNTY:		
Alameda (n=33)	87.88	12.12
Contra Costa (n=44)	77.27	22.73

Los Angeles (n=88)	98.86	1.14
Marin (n=13)	92.31	7.69
Napa (n=3)	66.67	33.33
Orange (n=47)	91.49	8.51
Sacramento (n=30)	83.33	16.67
San Diego (n=44)	86.36	13.64
San Francisco (n=7)	85.71	14.29
San Joaquin (n=12)	100.00	-
San Mateo (n=9)	55.56	44.44
Santa Clara (n=13)	100.00	-
Solano (n=11)	100.00	-
Sonoma (n=13)	100.00	-
Yolo (n=7)	100.00	-
TOTAL (N=374)	90.11	9.89

Q108. When the fuel dock attendant fuels your boat, do you ever see fuel spilled into the water?

REGION:	Yes	Yes, but rarely	No	Don't know	Refused
SF Bay (n=16)	-	50.00	50.00	-	-
SF Delta (n=32)	3.12	25.00	71.88	-	-
Southern CA (n=48)	10.42	27.08	62.50	-	-
Los Angeles (n=27)	7.41	33.33	55.56	3.70	-
COUNTY:					
Alameda (n=8)	-	62.50	37.50	-	-
Contra Costa (n=13)	-	15.38	84.62	-	-

Boating Clean and Green Survey, 1998

Los Angeles (n=27)	7.41	33.33	55.56	3.70	-
Marin (n=2)	-	100.00	-	-	-
Napa (n=0)	-	-	-	-	-
Orange (n=27)	-	40.74	59.26	-	-
Sacramento (n=13)	-	38.46	61.54	-	-
San Diego (n=21)	23.81	9.52	66.67	-	-
San Francisco (n=1)	-	-	100.00	-	-
San Joaquin (n=5)	-	20.00	80.00	-	-
San Mateo (n=0)	-	-	-	-	-
Santa Clara (n=4)	-	25.00	75.00	-	-
Solano (n=1)	100.00	-	-	-	-
Sonoma (n=1)	-	-	100.00	-	-
Yolo (n=0)	-	-	-	-	-
TOTAL (N=123)	6.50	30.89	61.79	0.81	-

Q109. Do you think that fuel spills from boats like yours pose no risk, only a slight risk, a moderate risk, or a great risk to the environment?

REGION:	No risk	Only a slight risk	A moderate risk	A great risk	Don't know	Refused
SF Bay (n=107)	24.30	41.12	18.69	14.95	0.93	-
SF Delta (n=136)	18.38	44.12	19.85	13.24	4.41	-
Southern CA (n=139)	20.14	48.20	17.27	14.39	-	-
Los Angeles (n=115)	17.39	46.96	18.26	15.65	1.74	-
COUNTY:						

Boating Clean and Green Survey, 1998

Alameda (n=41)	17.07	36.59	26.83	19.51	-	-
Contra Costa (n=57)	24.56	40.35	8.77	19.30	7.02	-
Los Angeles (n=115)	17.39	46.96	18.26	15.65	1.74	-
Marin (n=15)	33.33	33.33	13.33	20.00	-	-
Napa (n=3)	33.33	33.33	33.33	-	-	-
Orange (n=74)	16.22	45.95	18.92	18.92	-	-
Sacramento (n=43)	6.98	51.16	32.56	4.65	4.65	-
San Diego (n=65)	24.62	50.77	15.38	9.23	-	-
San Francisco (n=8)	37.50	37.50	-	25.00	-	-
San Joaquin (n=17)	5.88	47.06	41.18	5.88	-	-
San Mateo (n=9)	22.22	55.56	-	22.22	-	-
Santa Clara (n=17)	29.41	52.94	17.65	-	-	-
Solano (n=12)	41.67	25.00	-	33.33	-	-
Sonoma (n=14)	21.43	42.86	21.43	7.14	7.14	-
Yolo (n=7)	28.57	57.14	14.29	-	-	-
TOTAL (N=497)	19.92	45.27	18.51	14.49	1.81	-

Q110. Do you think free absorbent pads for use at fuel docks would reduce fuel spills?

REGION:	Yes	No	Don't know	Refused
SF Bay (n=107)	71.03	23.36	5.61	-
SF Delta (n=136)	67.65	20.59	11.76	-
Southern CA (n=139)	66.91	29.50	3.60	-
Los Angeles (n=115)	74.78	19.13	6.09	-
COUNTY:				
Alameda (n=41)	73.17	26.83		-

Boating Clean and Green Survey, 1998

Contra Costa (n=57)	78.95	10.53	10.53	-
Los Angeles (n=115)	74.78	19.13	6.09	-
Marin (n=15)	46.67	46.67	6.67	-
Napa (n=3)	33.33	33.33	33.33	-
Orange (n=74)	67.57	29.73	2.70	-
Sacramento (n=43)	48.84	34.88	16.28	-
San Diego (n=65)	66.15	29.23	4.62	-
San Francisco (n=8)	75.00	12.50	12.50	-
San Joaquin (n=17)	76.47	17.65	5.88	-
San Mateo (n=9)	88.89	11.11	-	-
Santa Clara (n=17)	70.59	23.53	5.88	-
Solano (n=12)	66.67	16.67	16.67	-
Sonoma (n=14)	85.17	7.14	7.14	-
Yolo (n=7)	71.43	28.57	-	-
TOTAL (N=497)	69.82	23.34	6.84	-

Q111. Do you think there would be fewer fuel spills if there were educational materials about the environmental impacts of boat fuel posted at fuel docks?

REGION:	Yes	No	Don't know	Refused
SF Bay (n=107)	61.68	32.71	5.61	-
SF Delta (n=136)	66.18	28.68	5.15	-
Southern CA (n=139)	60.43	35.97	3.60	-
Los Angeles (n=115)	57.39	35.65	6.96	-

COUNTY:				
Alameda (n=41)	56.10	41.46	2.44	-
Contra Costa (n=57)	64.91	29.82	5.26	-
Los Angeles (n=115)	57.39	35.65	6.96	-
Marin (n=15)	40.00	53.33	6.67	-
Napa (n=3)	66.67		33.33	-
Orange (n=74)	74.32	24.32	1.35	-
Sacramento (n=43)	60.47	34.88	4.65	-
San Diego (n=65)	44.62	49.23	6.15	-
San Francisco (n=8)	87.50	12.50	-	-
San Joaquin (n=17)	76.47	23.53	-	-
San Mateo (n=9)	88.89	11.11	-	-
Santa Clara (n=17)	64.71	23.53	11.76	-
Solano (n=12)	75.00	16.67	8.33	-
Sonoma (n=14)	64.29	28.57	7.14	-
Yolo (n=7)	71.43	14.29	14.29	-
TOTAL (N=497)	61.57	33.20	5.23	-

Q112. Are there any other things that you think would reduce spills during refueling?

REGION:	Yes	No	Don't know	Refused
SF Bay (n=107)	40.19	59.81	-	-
SF Delta (n=136)	34.56	65.44	-	-
Southern CA (n=139)	40.29	59.71	-	-
Los Angeles (n=115)	37.39	62.61	-	-
COUNTY:				

Boating Clean and Green Survey, 1998

Alameda (n=41)	46.34	53.66	-	-
Contra Costa (n=57)	33.33	66.67	-	-
Los Angeles (n=115)	37.39	62.61	-	-
Marin (n=15)	13.33	86.67	-	-
Napa (n=3)	66.67	33.33	-	-
Orange (n=74)	35.14	64.86	-	-
Sacramento (n=43)	44.19	55.81	-	-
San Diego (n=65)	46.15	53.85	-	-
San Francisco (n=8)	25.00	75.00	-	-
San Joaquin (n=17)	23.53	76.47	-	-
San Mateo (n=9)	55.56	44.44	-	-
Santa Clara (n=17)	35.29	64.71	-	-
Solano (n=12)	16.67	83.33	-	-
Sonoma (n=14)	50.00	50.00	-	-
Yolo (n=7)	42.86	57.14	-	-
TOTAL (N=497)	38.03	61.97	-	-

Q114. Now I would like to ask you about some things that you could do to reduce oil and fuel discharges into the water. I am going to read a list of possibilities. As I read each one, please tell me whether you would be very willing, somewhat willing, not very willing, or not at all willing to try it.

Q115. Willing to reduce Spills?

REGION:	Very willing	Somewhat willing	Not very willing	Not at all willing	Don't know	Refused
---------	--------------	------------------	------------------	--------------------	------------	---------

Boating Clean and Green Survey, 1998

SF Bay (n=18)	88.89	-	-	-	11.11	-
SF Delta (n=41)	78.05	7.32	-	7.32	-	7.32
Southern CA (n=49)	75.51	6.12	-	6.12	6.12	6.12
Los Angeles (n=24)	100.00	-	-	-	-	-
COUNTY:						
Alameda (n=15)	86.67	-	-	-	13.33	-
Contra Costa (n=20)	100.00	-	-	-	-	-
Los Angeles (n=24)	100.00	-	-	-	-	-
Marin (n=0)	-	-	-	-	-	-
Napa (n=0)	-	-	-	-	-	-
Orange (n=35)	74.29	8.57	-	-	8.57	8.57
Sacramento (n=21)	57.14	14.29	-	14.29	-	14.29
San Diego (n=14)	78.57	-	-	21.43	-	-
San Francisco (n=0)	-	-	-	-	-	-
San Joaquin (n=0)	-	-	-	-	-	-
San Mateo (n=3)	100.00	-	-	-	-	-
Santa Clara (n=0)	-	-	-	-	-	-
Solano (n=0)	-	-	-	-	-	-
Sonoma (n=0)	-	-	-	-	-	-
Yolo (n=0)	-	-	-	-	-	-
TOTAL (N=132)	82.58	4.55	-	4.55	3.79	4.55

Q116. Recycle your used oil filters?

REGION:	Very willing	Somewhat willing	Not very willing	Not at all willing	Don't know	Refused
SF Bay (n=18)	72.22	16.67	-	-	11.11	-
SF Delta (n=41)	70.73	7.32	-	14.63	-	7.32
Southern CA (n=49)	69.39	-	-	18.37	6.12	6.12
Los Angeles	87.50	-	12.50	-	-	-

Boating Clean and Green Survey, 1998

(n=24)						
COUNTY:						
Alameda (n=15)	66.67	20.00	-	-	13.33	-
Contra Costa (n=20)	100.00	-	-	-	-	-
Los Angeles (n=24)	87.50	-	12.50	-	-	-
Marin (n=0)	-	-	-	-	-	-
Napa (n=0)	-	-	-	-	-	-
Orange (n=35)	74.29	-	-	8.57	8.57	8.57
Sacramento (n=21)	42.86	14.29	-	28.57	-	14.29
San Diego (n=14)	57.14	-	-	42.86	-	-
San Francisco (n=0)	-	-	-	-	-	-
San Joaquin (n=0)	-	-	-	-	-	-
San Mateo (n=3)	100.00	-	-	-	-	-
Santa Clara (n=0)	-	-	-	-	-	-
Solano (n=0)	-	-	-	-	-	-
Sonoma (n=0)	-	-	-	-	-	-
Yolo (n=0)	-	-	-	-	-	-
TOTAL (N=132)	73.48	4.55	2.27	11.36	3.79	4.55

Q117. Call a toll free phone number to report oil spills.

REGION:	Very willing	Somewhat willing	Not very willing	Not at all willing	Don't know	Refused
SF Bay (n=230)	70.43	17.39	4.35	6.96	0.87	-
SF Delta (n=271)	60.15	24.35	4.06	7.01	1.85	2.58
Southern CA (n=269)	61.34	22.30	7.81	7.06	0.37	1.12

Boating Clean and Green Survey, 1998

Los Angeles (n=231)	58.44	21.65	6.93	9.09	2.60	1.30
COUNTY:						
Alameda (n=75)	77.33	13.33	5.33	4.00	-	-
Contra Costa (n=86)	62.79	19.77	2.33	11.63	1.16	2.33
Los Angeles (n=231)	58.44	21.65	6.93	9.09	2.60	1.30
Marin (n=32)	78.12	15.62	3.12	3.12	-	-
Napa (n=14)	78.57	14.29		7.14	-	-
Orange (n=131)	61.07	25.95	6.87	3.82	-	2.29
Sacramento (n=106)	55.66	25.47	5.66	6.60	1.89	4.72
San Diego (n=138)	61.59	18.84	8.70	10.14	0.72	-
San Francisco (n=15)	73.33	20.00	-	6.67	-	-
San Joaquin (n=38)	68.42	26.32	-	2.63	2.63	-
San Mateo (n=11)	54.55	36.36	9.09	-	-	-
Santa Clara (n=37)	51.35	24.32	-	18.92	5.41	-
Solano (n=25)	52.00	32.00	8.00	8.00	-	-
Sonoma (n=46)	69.57	15.22	8.70	6.52	-	-
Yolo (n=16)	68.75	25.00	-	-	6.25	-
TOTAL (N=1001)	62.44	21.58	5.79	7.49	1.40	1.30

Q118. Use a professional boat oil change service.

REGION:	Very willing	Somewhat willing	Not very willing	Not at all willing	Don't know	Refused
SF Bay (n=18)	55.56	11.11	16.67	16.67	-	-
SF Delta (n=41)	-	14.63	48.78	21.95	7.32	7.32
Southern CA (n=49)	34.69	12.24	6.12	34.69	6.12	6.12

Boating Clean and Green Survey, 1998

Los Angeles (n=24)	37.50	-	12.50	50.00	-	-
COUNTY:						
Alameda (n=15)	66.67	13.33	-	20.00	-	-
Contra Costa (n=20)	-	15.00	70.00	-	15.00	-
Los Angeles (n=24)	37.50	-	12.50	50.00	-	-
Marin (n=0)	-	-	-	-	-	-
Napa (n=0)	-	-	-	-	-	-
Orange (n=35)	40.00	8.57	8.57	34.29	-	8.57
Sacramento (n=21)	-	14.29	28.57	42.86	-	14.29
San Diego (n=14)	21.43	21.43	-	35.71	21.43	-
San Francisco (n=0)	-	-	-	-	-	-
San Joaquin (n=0)	-	-	-	-	-	-
San Mateo (n=3)	-	-	-	100.00	-	-
Santa Clara (n=0)	-	-	-	-	-	-
Solano (n=0)	-	-	-	-	-	-
Sonoma (n=0)	-	-	-	-	-	-
Yolo (n=0)	-	-	-	-	-	-
TOTAL (N=132)	27.27	10.61	21.97	31.06	4.55	4.55

Q119. Not top off your fuel tank when fueling in the water.

REGION:	Very willing	Somewhat willing	Not very willing	Not at all willing	Don't know	Refused
SF Bay (n=100)	68.00	5.00	1.00	11.00	9.00	6.00
SF Delta (n=134)	65.67	9.70	7.46	9.70	2.99	4.48
Southern CA (n=133)	63.13	12.78	1.50	6.77	13.53	2.26

Boating Clean and Green Survey, 1998

Los Angeles (n=101)	69.31	9.90	2.97	6.93	4.95	5.94
COUNTY:						
Alameda (n=37)	62.16	10.81	-	13.51	8.11	5.41
Contra Costa (n=43)	69.77	6.98	16.28	4.65	-	2.33
Los Angeles (n=101)	69.31	9.90	2.97	6.93	4.95	5.94
Marin (n=8)	62.50	-	-	37.50	-	-
Napa (n=10)	70.00	-	10.00	-	-	20.00
Orange (n=73)	67.12	13.70	-	4.11	10.96	4.11
Sacramento (n=61)	50.82	14.75	4.92	16.39	4.92	8.20
San Diego (n=60)	58.33	11.67	3.33	10.00	16.67	-
San Francisco (n=5)	100.00	-	-	-	-	-
San Joaquin (n=13)	84.62	7.69	-	7.69	-	-
San Mateo (n=7)	71.43	-	-	-	14.29	14.29
Santa Clara (n=17)	58.82	5.88	-	5.88	23.53	5.88
Solano (n=11)	90.91	-	-	-	9.09	-
Sonoma (n=16)	81.25	-	-	12.50	6.25	-
Yolo (n=6)	100.00	-	-	-	-	-
TOTAL (N=468)	66.24	9.62	3.42	8.55	7.69	4.49

Q120. Install an inexpensive fuel spill prevention device.

REGION:	Very willing	Somewhat willing	Not very willing	Not at all willing	Don't know	Refused
SF Bay (n=230)	39.57	23.04	1.30	27.39	8.26	0.43
SF Delta (n=271)	35.79	22.88	7.01	20.30	8.86	5.17
Southern CA (n=269)	39.41	23.42	6.32	19.70	8.55	2.60

Boating Clean and Green Survey, 1998

Los Angeles (n=231)	37.23	23.81	6.49	21.65	9.09	1.73
COUNTY:						
Alameda (n=75)	36.00	24.00	-	30.67	9.33	
Contra Costa (n=86)	34.88	24.42	6.98	20.93	9.30	3.49
Los Angeles (n=231)	37.23	23.81	6.49	21.65	9.09	1.73
Marin (n=32)	34.38	21.88	3.12	31.25	9.38	
Napa (n=14)	57.14	21.43	7.14	7.14		7.14
Orange (n=131)	33.59	32.06	4.58	16.03	9.16	4.58
Sacramento (n=106)	37.74	20.75	4.72	18.87	11.32	6.60
San Diego (n=138)	44.93	15.22	7.97	23.19	7.97	0.72
San Francisco (n=15)	60.00	13.33	-	20.00	6.67	
San Joaquin (n=38)	26.32	31.58	13.16	21.05	2.63	5.26
San Mateo (n=11)	36.36	54.55	-	9.09	-	-
Santa Clara (n=37)	35.14	18.92	2.70	35.14	8.11	-
Solano (n=25)	40.00	12.00	8.00	20.00	12.00	8.00
Sonoma (n=46)	41.30	21.74	-	26.09	10.87	-
Yolo (n=16)	43.75	25.00	6.25	25.00	-	-
TOTAL (N=1001)	37.96	23.28	5.39	22.08	8.69	2.60

Q121 Use an absorbent pad to soak up fuel spills.

REGION:	Very willing	Somewhat willing	Not very willing	Not at all willing	Don't know	Refused
SF Bay (n=230)	80.00	8.26	-	8.26	3.48	-
SF Delta (n=271)	66.79	16.24	1.85	8.12	3.32	3.69

Boating Clean and Green Survey, 1998

Southern CA (n=269)	63.57	18.22	0.37	8.18	7.81	1.86
Los Angeles (n=231)	67.53	16.45	1.30	8.66	4.33	1.73
COUNTY:						
Alameda (n=75)	78.67	10.67		9.33	1.33	-
Contra Costa (n=86)	67.44	13.95	2.33	6.98	5.81	3.49
Los Angeles (n=231)	67.53	16.45	1.30	8.66	4.33	1.73
Marin (n=32)	87.50	-	-	6.25	6.25	-
Napa (n=14)	78.57	7.14	-	14.29	-	-
Orange (n=131)	63.36	19.85	0.76	6.11	6.11	3.82
Sacramento (n=106)	63.21	15.09	0.94	11.32	2.83	6.60
San Diego (n=138)	63.77	16.67	-	10.14	9.42	-
San Francisco (n=15)	100.00	-	-	-	-	-
San Joaquin (n=38)	65.79	28.95	2.63	2.63	-	-
San Mateo (n=11)	90.91	9.09	-	-	-	-
Santa Clara (n=37)	81.08	5.41	-	8.11	5.41	-
Solano (n=25)	80.00	4.00	4.00	8.00	4.00	-
Sonoma (n=46)	67.39	15.22	-	10.87	6.52	-
Yolo (n=16)	68.75	25.00	-	6.25	-	-
TOTAL (N=1001)	69.13	14.99	0.90	8.29	4.80	1.90

Q122. Next I'm going to read a list of possible sources where someone might get boating information. Please indicate which sources you use. Cal North boating directory?

REGION:	Yes	No
SF Bay (n=230)	22.61	77.39

SF Delta (n=271)	21.77	78.39
Southern CA (n=269)	5.20	94.80
Los Angeles (n=231)	12.12	87.88
COUNTY:		
Alameda (n=75)	32.00	68.00
Contra Costa (n=86)	25.58	74.42
Los Angeles (n=231)	12.12	87.88
Marin (n=32)	28.12	71.88
Napa (n=14)	7.14	92.86
Orange (n=131)	6.87	93.13
Sacramento (n=106)	16.04	83.96
San Diego (n=138)	3.62	96.38
San Francisco (n=15)	13.33	86.67
San Joaquin (n=38)	18.42	81.58
San Mateo (n=11)	27.27	72.73
Santa Clara (n=37)	24.32	75.68
Solano (n=25)	28.00	72.00
Sonoma (n=46)	8.70	91.30
Yolo (n=16)	37.50	62.50
TOTAL (N=1001)	15.28	84.72

Q123. Latitude 38.

REGION:	Yes	No
----------------	-----	----

SF Bay (n=230)	30.87	69.13
SF Delta (n=271)	22.14	77.86
Southern CA (n=269)	14.87	85.13
Los Angeles (n=231)	14.29	85.71
COUNTY:		
Alameda (n=75)	32.00	68.00
Contra Costa (n=86)	26.74	73.26
Los Angeles (n=231)	14.29	85.71
Marin (n=32)	50.00	50.00
Napa (n=14)	7.14	92.86
Orange (n=131)	13.74	86.26
Sacramento (n=106)	16.98	83.02
San Diego (n=138)	15.94	84.06
San Francisco (n=15)	60.00	40.00
San Joaquin (n=38)	26.32	73.68
San Mateo (n=11)	45.45	54.55
Santa Clara (n=37)	27.03	72.97
Solano (n=25)	16.00	84.00
Sonoma (n=46)	13.04	86.96
Yolo (n=16)	31.25	68.75
TOTAL (N=1001)	20.23	79.2

Q124. Other boating publications.

REGION:	Yes	No
SF Bay (n=230)	42.61	57.39
SF Delta (n=271)	36.16	63.84
Southern CA (n=269)	47.96	52.04
Los Angeles (n=231)	47.62	52.38
COUNTY:		
Alameda (n=75)	42.67	57.33
Contra Costa (n=86)	31.40	68.60
Los Angeles (n=231)	47.62	52.38
Marin (n=32)	53.12	46.88
Napa (n=14)	28.57	71.43
Orange (n=131)	43.51	56.49
Sacramento (n=106)	32.08	67.92
San Diego (n=138)	52.17	47.83
San Francisco (n=15)	60.00	40.00
San Joaquin (n=38)	52.63	47.37
San Mateo (n=11)	45.45	54.55
Santa Clara (n=37)	35.14	64.86
Solano (n=25)	40.00	60.00
Sonoma (n=46)	39.13	60.87
Yolo (n=16)	43.75	56.25
TOTAL (N=1001)	43.46	56.54

Q128. The internet?

REGION:	Yes	No
SF Bay (n=230)	15.22	84.78
SF Delta (n=271)	14.39	85.61
Southern CA (n=269)	17.84	82.16
Los Angeles (n=231)	16.45	83.55
COUNTY:		
Alameda (n=75)	17.33	82.67
Contra Costa (n=86)	13.95	86.05
Los Angeles (n=231)	16.45	83.55
Marin (n=32)	9.38	90.62
Napa (n=14)		100.00
Orange (n=131)	19.08	80.92
Sacramento (n=106)	16.98	83.02
San Diego (n=138)	16.67	83.33
San Francisco (n=15)	6.67	93.33
San Joaquin (n=38)	13.16	86.84
San Mateo (n=11)	9.09	90.91
Santa Clara (n=37)	32.43	67.57
Solano (n=25)	8.00	92.00
Sonoma (n=46)	10.87	89.13
Yolo (n=16)	12.50	87.50
TOTAL (N=1001)	15.98	84.02

Q130. Boat shows.

REGION:	Yes	No
SF Bay (n=230)	60.00	40.00
SF Delta (n=271)	50.55	49.45
Southern CA (n=269)	53.90	46.10
Los Angeles (n=231)	60.61	39.39
COUNTY:		
Alameda (n=75)	65.33	34.67
Contra Costa (n=86)	51.16	48.84
Los Angeles (n=231)	60.61	39.39
Marin (n=32)	59.38	40.62
Napa (n=14)	50.00	50.00
Orange (n=131)	54.20	45.80
Sacramento (n=106)	49.06	50.94
San Diego (n=138)	53.62	46.38
San Francisco (n=15)	46.67	53.33
San Joaquin (n=38)	39.47	60.53
San Mateo (n=11)	72.73	27.27
Santa Clara (n=37)	56.76	43.24
Solano (n=25)	64.00	36.00
Sonoma (n=46)	58.70	41.30
Yolo (n=16)	62.50	37.50
TOTAL (N=1001)	55.94	44.06

Q131. Marine supply shops.

REGION:	Yes	No
SF Bay (n=230)	75.22	24.78
SF Delta (n=271)	67.16	32.84
Southern CA (n=269)	79.93	20.07
Los Angeles (n=231)	75.32	24.68
COUNTY:		
Alameda (n=75)	73.33	26.67
Contra Costa (n=86)	70.93	29.07
Los Angeles (n=231)	75.32	24.68
Marin (n=32)	81.25	18.75
Napa (n=14)	57.14	42.86
Orange (n=131)	81.68	18.32
Sacramento (n=106)	60.38	39.62
San Diego (n=138)	78.26	21.74
San Francisco (n=15)	73.33	26.67
San Joaquin (n=38)	76.32	23.68
San Mateo (n=11)	90.91	9.09
Santa Clara (n=37)	78.38	21.62
Solano (n=25)	64.00	36.00
Sonoma (n=46)	73.91	26.09
Yolo (n=16)	75.00	25.00
TOTAL (N=1001)	74.33	25.67

Q132. Local government agency.

REGION:	Yes	No
SF Bay (n=230)	31.74	68.26
SF Delta (n=271)	39.85	60.15
Southern CA (n=269)	34.94	65.06
Los Angeles (n=231)	43.29	56.71
COUNTY:		
Alameda (n=75)	44.00	56.00
Contra Costa (n=86)	32.56	67.44
Los Angeles (n=231)	43.29	56.71
Marin (n=32)	21.88	78.12
Napa (n=14)	50.00	50.00
Orange (n=131)	33.59	66.41
Sacramento (n=106)	47.17	52.83
San Diego (n=138)	36.23	63.77
San Francisco (n=15)	26.67	73.33
San Joaquin (n=38)	42.11	57.89
San Mateo (n=11)	9.09	90.91
Santa Clara (n=37)	18.92	81.08
Solano (n=25)	32.00	68.00
Sonoma (n=46)	30.43	69.57
Yolo (n=16)	37.50	62.50
TOTAL (N=1001)	37.46	62.54

Q133. Friends and relatives.

REGION:	Yes	No
SF Bay (n=230)	57.39	42.61
SF Delta (n=271)	57.93	42.07
Southern CA (n=269)	55.39	44.61
Los Angeles (n=231)	49.35	50.65
COUNTY:		
Alameda (n=75)	66.67	33.33
Contra Costa (n=86)	52.33	47.67
Los Angeles (n=231)	49.35	50.65
Marin (n=32)	59.38	40.62
Napa (n=14)	35.71	64.29
Orange (n=131)	57.25	42.75
Sacramento (n=106)	60.38	39.62
San Diego (n=138)	53.62	46.38
San Francisco (n=15)	60.00	40.00
San Joaquin (n=38)	63.16	36.84
San Mateo (n=11)	81.82	18.18
Santa Clara (n=37)	62.16	37.84
Solano (n=25)	48.00	52.00
Sonoma (n=46)	36.96	63.04
Yolo (n=16)	75.00	25.00
TOTAL (N=1001)	54.14	45.86

Q134. Boating associations.

REGION:	Yes	No
SF Bay (n=230)	28.26	71.74
SF Delta (n=271)	26.20	73.80
Southern CA (n=269)	35.69	64.31
Los Angeles (n=231)	35.50	64.50
COUNTY:		
Alameda (n=75)	32.00	68.00
Contra Costa (n=86)	26.74	73.26
Los Angeles (n=231)	35.50	64.50
Marin (n=32)	40.62	59.38
Napa (n=14)	7.14	92.86
Orange (n=131)	39.69	60.31
Sacramento (n=106)	20.75	79.25
San Diego (n=138)	31.88	68.12
San Francisco (n=15)	53.33	46.67
San Joaquin (n=38)	39.47	60.53
San Mateo (n=11)	36.36	63.64
Santa Clara (n=37)	29.73	70.27
Solano (n=25)	24.00	76.00
Sonoma (n=46)	8.70	91.30
Yolo (n=16)	31.25	68.75
TOTAL (N=1001)	31.37	68.63

Q135. Your yacht club.

REGION:	Yes	No
SF Bay (n=230)	19.13	80.87
SF Delta (n=271)	16.61	83.39
Southern CA (n=269)	20.07	79.93
Los Angeles (n=231)	16.88	83.12
COUNTY:		
Alameda (n=75)	17.33	82.67
Contra Costa (n=86)	15.12	84.88
Los Angeles (n=231)	16.88	83.12
Marin (n=32)	37.50	62.50
Napa (n=14)	14.29	85.71
Orange (n=131)	18.32	81.68
Sacramento (n=106)	13.21	86.79
San Diego (n=138)	21.74	78.26
San Francisco (n=15)	33.33	66.67
San Joaquin (n=38)	23.68	76.32
San Mateo (n=11)	27.27	72.73
Santa Clara (n=37)	18.92	81.08
Solano (n=25)	20.00	80.00
Sonoma (n=46)	4.35	95.65
Yolo (n=16)	25.00	75.00
TOTAL (N=1001)	18.18	81.82

Q136. Cable TV boating programs.

REGION:	Yes	No
SF Bay (n=230)	23.04	76.96
SF Delta (n=271)	21.03	78.97
Southern CA (n=269)	30.11	69.89
Los Angeles (n=231)	23.81	76.19
COUNTY:		
Alameda (n=75)	21.33	78.67
Contra Costa (n=86)	19.77	80.23
Los Angeles (n=231)	23.81	76.19
Marin (n=32)	9.38	90.62
Napa (n=14)	21.43	78.57
Orange (n=131)	27.48	72.52
Sacramento (n=106)	23.58	76.42
San Diego (n=138)	32.61	67.39
San Francisco (n=15)	13.33	86.67
San Joaquin (n=38)	21.05	78.95
San Mateo (n=11)	27.27	72.73
Santa Clara (n=37)	24.32	75.68
Solano (n=25)	20.00	80.00
Sonoma (n=46)	36.96	63.04
Yolo (n=16)	12.50	87.50
TOTAL (N=1001)	24.58	75.42

Q137. Radio boating programs.

REGION:	Yes	No
SF Bay (n=230)	13.48	86.52
SF Delta (n=271)	10.33	89.67
Southern CA (n=269)	10.78	89.22
Los Angeles (n=231)	9.52	90.48
COUNTY:		
Alameda (n=75)	20.00	80.00
Contra Costa (n=86)	10.47	89.53
Los Angeles (n=231)	9.52	90.48
Marin (n=32)	9.38	90.62
Napa (n=14)	14.29	85.71
Orange (n=131)	9.16	90.84
Sacramento (n=106)	8.49	91.51
San Diego (n=138)	12.32	87.68
San Francisco (n=15)	6.67	93.33
San Joaquin (n=38)	13.16	86.84
San Mateo (n=11)	9.09	90.91
Santa Clara (n=37)	8.11	91.89
Solano (n=25)	12.00	88.00
Sonoma (n=46)	13.04	86.96
Yolo (n=16)	12.50	87.50
TOTAL (N=1001)	10.99	89.01

Q138. Boating column in your local newspaper.

REGION:	Yes	No
SF Bay (n=230)	36.52	63.48
SF Delta (n=271)	36.16	63.84
Southern CA (n=269)	37.92	62.08
Los Angeles (n=231)	24.24	75.76
COUNTY:		
Alameda (n=75)	34.67	65.33
Contra Costa (n=86)	24.42	75.58
Los Angeles (n=231)	24.24	75.76
Marin (n=32)	40.62	59.38
Napa (n=14)	35.71	64.29
Orange (n=131)	38.93	61.07
Sacramento (n=106)	39.62	60.38
San Diego (n=138)	36.96	63.04
San Francisco (n=15)	33.33	66.67
San Joaquin (n=38)	42.11	57.89
San Mateo (n=11)	9.09	90.91
Santa Clara (n=37)	35.14	64.86
Solano (n=25)	44.00	56.00
Sonoma (n=46)	45.65	54.35
Yolo (n=16)	50.00	50.00
TOTAL (N=1001)	33.97	66.03

Q140. Do you get boating information from any other source?

REGION:	Yes	No
SF Bay (n=230)	20.00	80.00
SF Delta (n=271)	24.35	75.65
Southern CA (n=269)	24.16	75.84
Los Angeles (n=231)	24.24	75.76
COUNTY:		
Alameda (n=75)	26.67	73.33
Contra Costa (n=86)	13.95	86.05
Los Angeles (n=231)	24.24	75.76
Marin (n=32)	15.62	84.38
Napa (n=14)	21.43	78.57
Orange (n=131)	23.66	76.34
Sacramento (n=106)	27.36	72.64
San Diego (n=138)	24.64	75.36
San Francisco (n=15)	20.00	80.00
San Joaquin (n=38)	23.68	76.32
San Mateo (n=11)	-	100.00
Santa Clara (n=37)	16.22	83.78
Solano (n=25)	44.00	56.00
Sonoma (n=46)	19.57	80.43
Yolo (n=16)	31.25	68.75
TOTAL (N=1001)	23.28	76.72

Lastly, in order to classify your responses with those of other people, I need to ask you a few demographic questions.

Q142. First, what is your age?

REGION:	18 to 29	30 to 39	40 to 49	50to 59	60 to 69	70 and Over
SF Bay (n=230)	0.87	6.09	20.43	26.09	24.35	22.17
SF Delta (n=271)	0.74	8.12	15.87	25.09	22.51	27.68
Southern CA (n=269)	1.12	10.78	17.84	27.51	22.30	20.45
Los Angeles (n=231)	0.43	8.66	15.15	20.35	29.44	25.97
COUNTY:						
Alameda (n=75)	-	2.67	14.67	36.00	25.33	21.33
Contra Costa (n=86)	-	11.63	17.44	19.77	23.26	27.91
Los Angeles (n=231)	0.43	8.66	15.15	20.35	29.44	25.97
Marin (n=32)	3.12	6.25	25.00	18.75	25.00	21.88
Napa (n=14)	-	7.14	21.43	50.00	-	21.43
Orange (n=131)	-	12.21	15.27	32.06	22.90	17.56
Sacramento (n=106)	0.94	4.72	17.92	21.70	24.53	30.19
San Diego (n=138)	2.17	9.42	20.29	23.19	21.74	23.19
San Francisco (n=15)	-	-	26.67	6.67	6.67	60.00
San Joaquin (n=38)	-	7.89	10.53	34.12	26.32	21.05
San Mateo (n=11)	-	18.18	-	45.45	27.27	9.09
Santa Clara (n=37)	-	8.11	35.14	16.22	24.32	16.22
Solano (n=25)	4.00	4.00	16.00	36.00	12.00	28.00
Sonoma (n=46)	2.17	8.70	17.39	17.39	34.78	19.57
Yolo (n=16)	-	18.75	6.25	37.50	12.50	25.00
TOTAL (N=1001)	.8	8.49	17.28	24.88	24.48	24.08

Q143. What was your 1996 annual income before taxes?

REGION:	Less than \$25,000	\$26,000 to \$50,000	\$51,000 to \$75,000	\$76,000 to \$100,000	More than \$100,000	Don't know	Refused
SF Bay (n=230)	5.22	27.39	13.91	9.13	12.61	8.26	23.48
SF Delta (n=271)	11.44	31.00	17.34	3.69	6.64	5.90	23.99
Southern CA (n=269)	7.43	26.77	14.87	9.67	13.38	3.72	24.16
Los Angeles (n=231)	6.49	21.65	14.29	9.09	11.69	8.66	28.14
COUNTY:							
Alameda (n=75)	6.67	28.00	12.00	10.67	9.33	6.67	26.67
Contra Costa (n=86)	9.30	33.72	13.95	1.16	13.95	8.14	19.77
Los Angeles (n=231)	6.49	21.65	14.29	9.09	11.69	8.66	28.14
Marin (n=32)	6.25	18.75	15.62	6.25	28.12	9.38	15.62
Napa (n=14)	14.29	21.43	7.14	7.14	14.29	14.29	21.43
Orange (n=131)	6.87	16.79	13.74	13.74	17.56	2.29	29.01
Sacramento (n=106)	10.38	32.08	22.64	4.72	1.89	4.72	23.58
San Diego (n=138)	7.97	36.23	15.94	5.80	9.42	5.07	19.57
San Francisco (n=15)	-	46.67	13.33	-	20.00	6.67	13.33
San Joaquin (n=38)	26.32	21.05	10.53	2.63	5.26	5.26	28.95
San Mateo (n=11)	-	27.27	9.09	27.27	-	9.09	27.27
Santa Clara (n=37)	5.41	16.22	16.22	13.51	16.22	10.81	21.62
Solano (n=25)	8.00	28.00	16.00	8.00	4.00	8.00	28.00
Sonoma (n=46)	2.17	36.96	17.39	4.35	4.35	6.52	28.26
Yolo (n=16)	-	37.50	18.75	6.25	6.25	-	31.25
TOTAL (N=1001)	7.79	26.87	15.18	7.79	10.99	6.49	24.88

Q144. We would also like to know your racial or ethnic group.

REGION:	Caucasian	African-American	Asian	Latino	Native American	Other or mixed race	Refused
SF Bay (n=230)	85.22	1.74	1.74	0.43	0.87	3.48	6.52
SF Delta (n=271)	84.50	2.95	2.58	2.21	1.48	3.69	2.58
Southern CA (n=269)	86.62	0.74	0.74	1.49	1.12	1.86	7.43
Los Angeles (n=231)	87.45	1.73	1.30	0.43	0.87	2.60	5.63
COUNTY:							
Alameda (n=75)	85.33	4.00	1.33	-	-	2.67	6.67
Contra Costa (n=86)	79.07	2.33	3.49	2.33	1.16	5.81	5.81
Los Angeles (n=231)	87.45	1.73	1.30	0.43	0.87	2.6	5.63
Marin (n=32)	84.38	-	3.12	-	3.12	3.12	6.25
Napa (n=14)	92.86	-	-	-	-	7.14	0
Orange (n=131)	91.60	-	-	1.53	0.76	0.76	5.34
Sacramento (n=106)	86.79	4.72	3.77	1.89	0.94	0.84	0.94
San Diego (n=138)	81.88	1.45	1.45	1.45	1.45	2.90	9.42
San Francisco (n=15)	86.67	-	6.67	-	-	-	6.67
San Joaquin (n=38)	92.11	-	-	2.63	-	5.26	-
San Mateo (n=11)	90.91	-	-	-	-	-	9.09
Santa Clara (n=37)	91.89	-	2.70	-	-	2.7	2.7
Solano (n=25)	84.00	2.17	-	4	4	4	4
Sonoma (n=46)	76.09	6.25	-	2.17	2.17	6.52	10.87
Yolo (n=16)	81.25	-	-	-	6.25	6.25	-
TOTAL (N= 1001)	85.91	1.8	1.6	1.2	1.1	2.9	5.49

Q160. Gender of the respondent.

REGION:	Male	Female
SF Bay (n=230)	100.00	-
SF Delta (n=271)	100.00	-
Southern CA (n=269)	100.00	-
Los Angeles (n=231)	70.00	30.00
COUNTY:		
Alameda (n= 75)	100.00	-
Contra Costa (n=86)	100.00	-
Los Angeles (n=231)	30.30	69.70
Marin (n= 32)	100.00	-
Napa (n= 14)	100.00	-
Orange (n= 131)	100.00	-
Sacramento (n=106)	100.00	-
San Diego (n= 138)	100.00	-
San Francisco (n= 15)	100.00	-
San Joaquin (n= 38)	100.00	-
San Mateo (n= 11)	100.00	-
Santa Clara (n= 37)	100.00	-
Solano (n= 25)	100.00	-
Sonoma (n= 16)	100.00	-
Yolo (n=16)	100.00	-
TOTAL (N= 1001)	83.92	16.08