

# San Luis Obispo County

## Coastal Regional Sediment Management

...one of several plans of the California Coastal Sediment Master Plan



### Coastal RSM Plan Overview

The San Luis Obispo County CRSMP formulates consensus-driven regional sediment management guidance and policy. This Plan, which covers the coastal shoreline and environs of San Luis Obispo County, focuses on coastal stretches where mitigating existing and supporting future coastal erosion responses and other co-objectives – e.g., ecological rehabilitation, recreational improvements, and protecting property and infrastructure – are or will be crucial. The Plan supports the desire to identify regional approaches that are often more effective, less costly, and easier to fund than local efforts.

Regional sediment management (RSM) is an approach to solving or minimizing shoreline and watershed problems caused by human modifications.

The statewide California Coastal Sediment Master Plan, which is led by the Coastal Sediment Management

Workgroup, endeavors to protect, enhance, and restore California's coastal beaches and watersheds through federal, state, and local cooperative efforts.

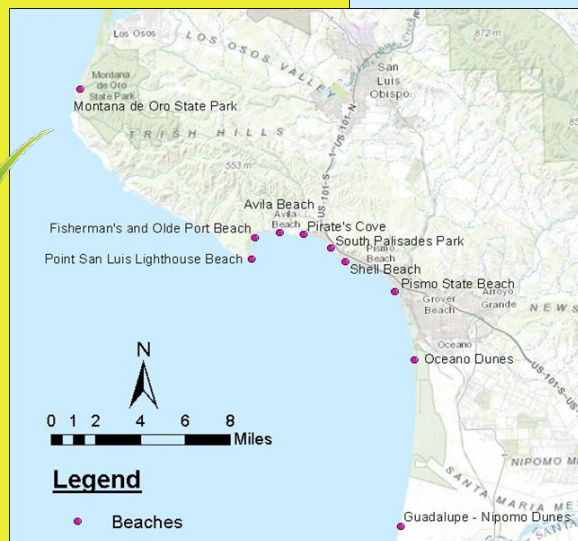
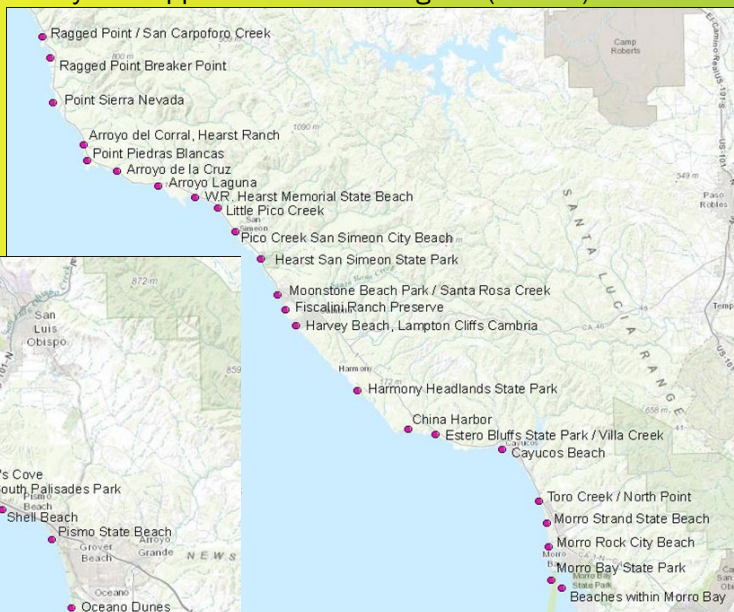
The San Luis Obispo County Coastal Regional Sediment Management Plan (CRSMP), which is part of this statewide program, is led by the San Luis Obispo Council of Governments (SLOCOG).

### Coastal RSM Activities

Regional coastal concerns include

- understanding the impacts of erosion and sea level rise on county beaches (map)
- beneficially using sand trapped at Morro Bay Harbor and Port San Luis
- preserving and improving drainage-basin natural sediment sources and sediment delivery pathways
- understanding the sediment budget for the Santa Maria Littoral Cell
- developing a Sand Compatibility and Opportunistic Use Program (SCOUP)

SLO County beaches: Monterey County line to Morro Bay



SLO County beaches: Montana de Oro to Santa Barbara County line